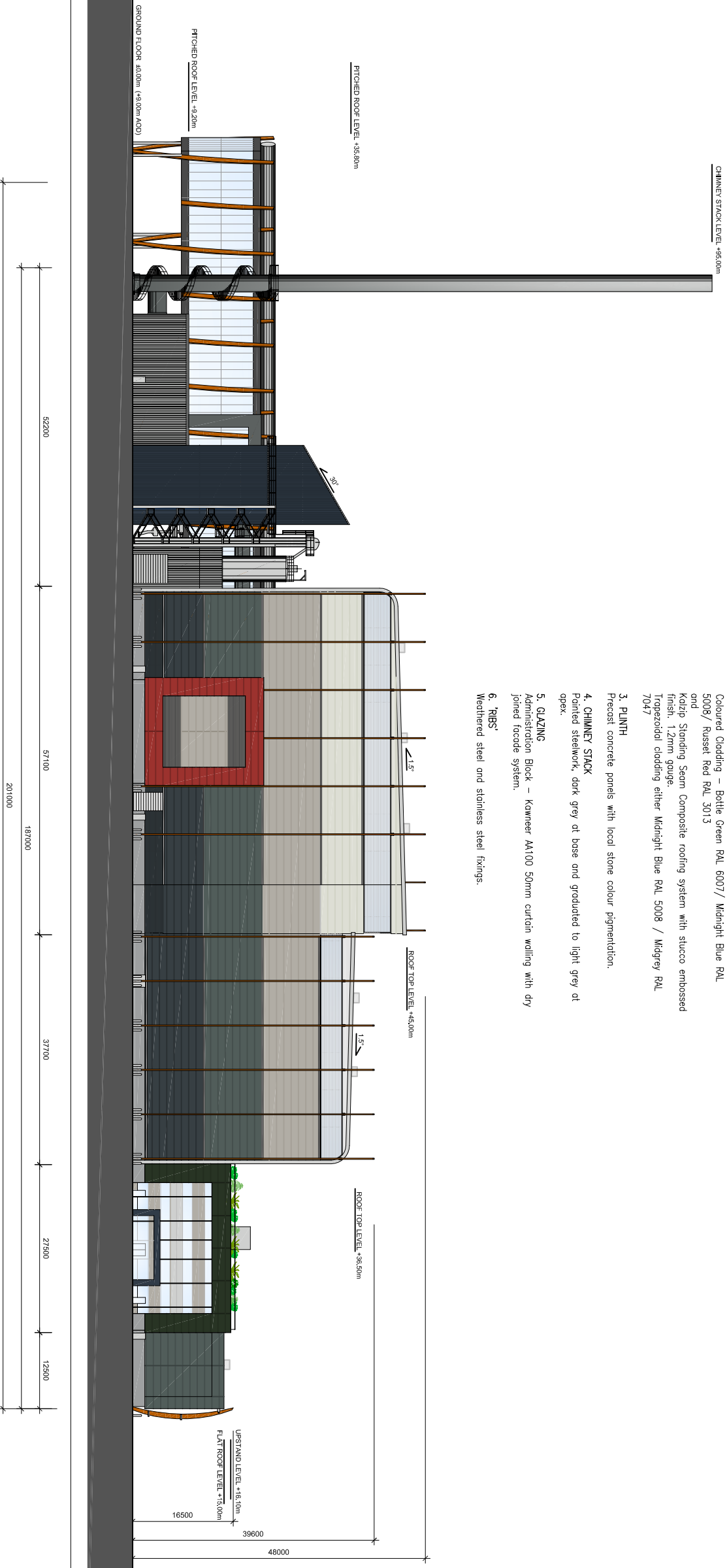


THIS DRAWING MAY BE USED ONLY FOR THE PURPOSE INTENDED AND ONLY WRITTEN DIMENSIONS SHALL BE USED

MATERIAL NOTES :

1. **ROOF**
Katzip Standing Seam Composite roofing system with stucco embossed finish 1.2mm gauge. Radius of eaves to be 2.5m and Kingspan Topdeck Single Ply PVC membrane roof deck finished in non standard colour to match wall cladding.
2. **WALLS/VERGE/EAVES/OPENING SURROUNDS**
Kingspan Longspan micro rfb panel with XL Forle external coating and white polyester internal coating. Spans up to 8m
Grey Cladding (from top to bottom) – Anthracite RAL 7016/ Merlin Grey RAL 180 40 05/ Cooswing Grey RAL 080 70 05/ Grey White RAL 9002
Coloured Cladding – Bottle Green RAL 6007/ Midnight Blue RAL 5008/ Russet Red RAL 3013 and
Katzip Standing Seam Composite roofing system with stucco embossed finish. 1.2mm gauge.
Trapezoidal cladding either Midnight Blue RAL 5008 / Midgrey RAL 7047
3. **PUNTH**
Precast concrete panels with local stone colour pigmentation.
4. **CHIMNEY STACK**
Painted steelwork, dark grey at base and graduated to light grey at apex.
5. **GLAZING**
Administration Block – Kawneer AA100 50mm curtain walling with dry joined facade system.
6. **'RBS'**
Weathered steel and stainless steel fixings.



NOTES

Revision Details	By	Date	Suffix

Drawing Status
PLANNING

Job Title
**EFW CHP FACILITY
NORTH YARD
DEVONPORT**

Drawing Title
**Proposed
North-West Elevation
Main Building with ACC's**

Scale at A3
NTS

Drawn	Approved
MA	AH

Stage 1 check	Stage 2 check	Originated	Date
MA	SL	AH	10.05.11

Drawing Number	Rev
FIGURE 6.2A	



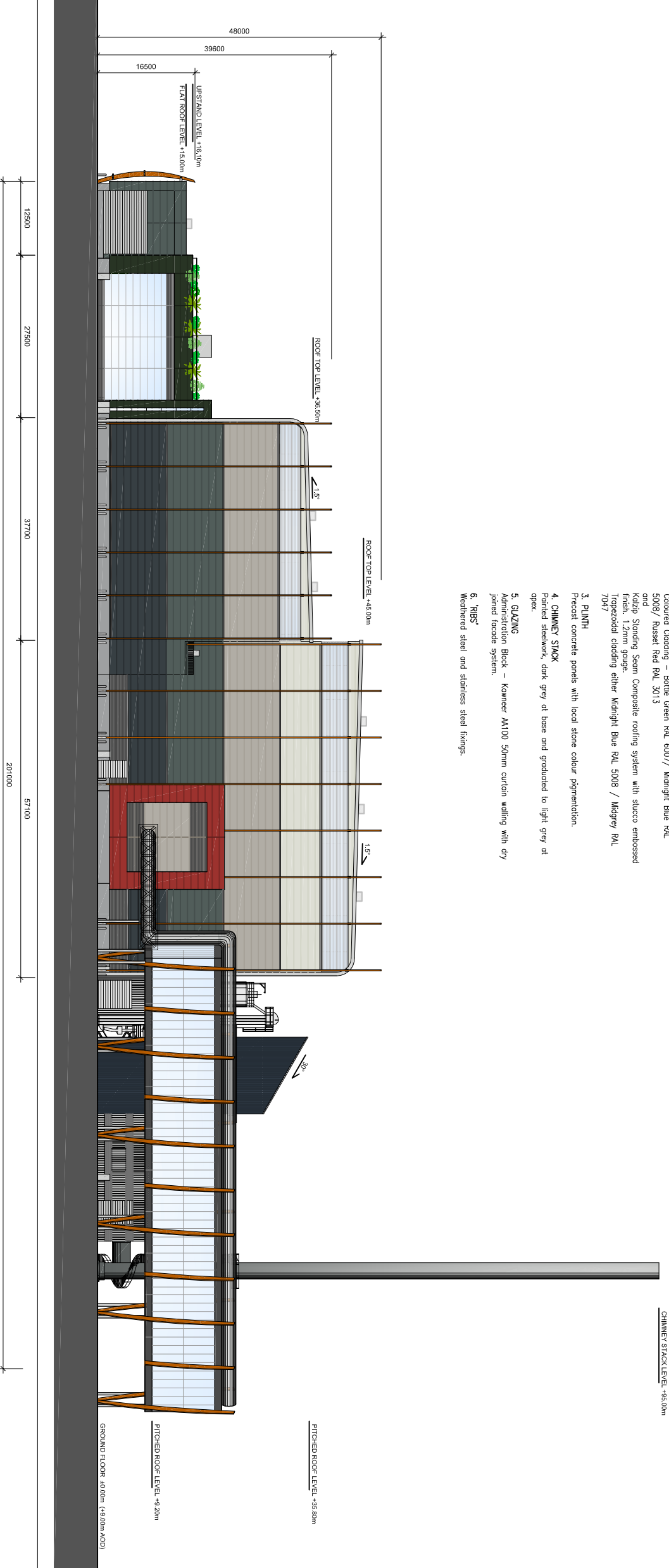
Contractor to SWDWP
Environmental & Planning Consultant
EPC Contractor
Envir Con & Plant Engineering GmbH General Designer
Civil Works
Architect
Air Pollution Control
Boiler & Grate
Electrical & Control
Water Steam System

THIS DRAWING MAY BE USED ONLY FOR THE PURPOSE INTENDED AND ONLY WRITTEN DIMENSIONS SHALL BE USED

NOTES

ARCHITECTURAL MATERIAL NOTES :

1. **ROOF**
Kaltz Standing Seam Composite roofing system with stucco embossed finish, 1.2mm gauge. Radius at eaves to be 25mm and Krongson Topdeck Single Ply PVC membrane roof deck finished in non standard colour to match wall cladding.
2. **WALLS/VERGE/EAVES/OPENING SURROUNDS**
Krongson Longspan micro rib panel with XL Forte external coating and white polyester internal coating. Spans up to 8m
Grey Cladding (from top to bottom) – Anthracite RAL 7016/ Merlin Grey RAL 180 40 06/ Gooswing Grey RAL 080 70 05/ Grey White RAL 9002
Coloured Cladding – Battle Green RAL 6007/ Midnight Blue RAL 5008/ Russet Red RAL 3013
and
Kaltz Standing Seam Composite roofing system with stucco embossed finish, 1.2mm gauge.
Trapezoidal cladding either Midnight Blue RAL 5008 / Midgrey RAL 7047
3. **PLINTH**
Precast concrete panels with local stone colour pigmentation.
4. **CHIMNEY STACK**
Painted steelwork, dark grey at base and graduated to light grey at apex.
5. **GLAZING**
Administration Block – Kameer A4100 50mm curtain walling with dry jointed facade system.
6. **IRRS***
Weathered steel and stainless steel fixings.



South - East Elevation

Revision Details	By	Date	Suffix

PLANNING

Job Title
**EFW CHP FACILITY
NORTH YARD
DEVONPORT**

Drawing Title
**Proposed
South-East Elevation
Main Building with ACC's**

Scale at A3
NTS

Drawn	Approved
MA	AH
MA	AH

Stage 1 check	Stage 2 check	Originated	Date
MA	SL	AH	10.05.11

Drawing Number
FIGURE 6.2B



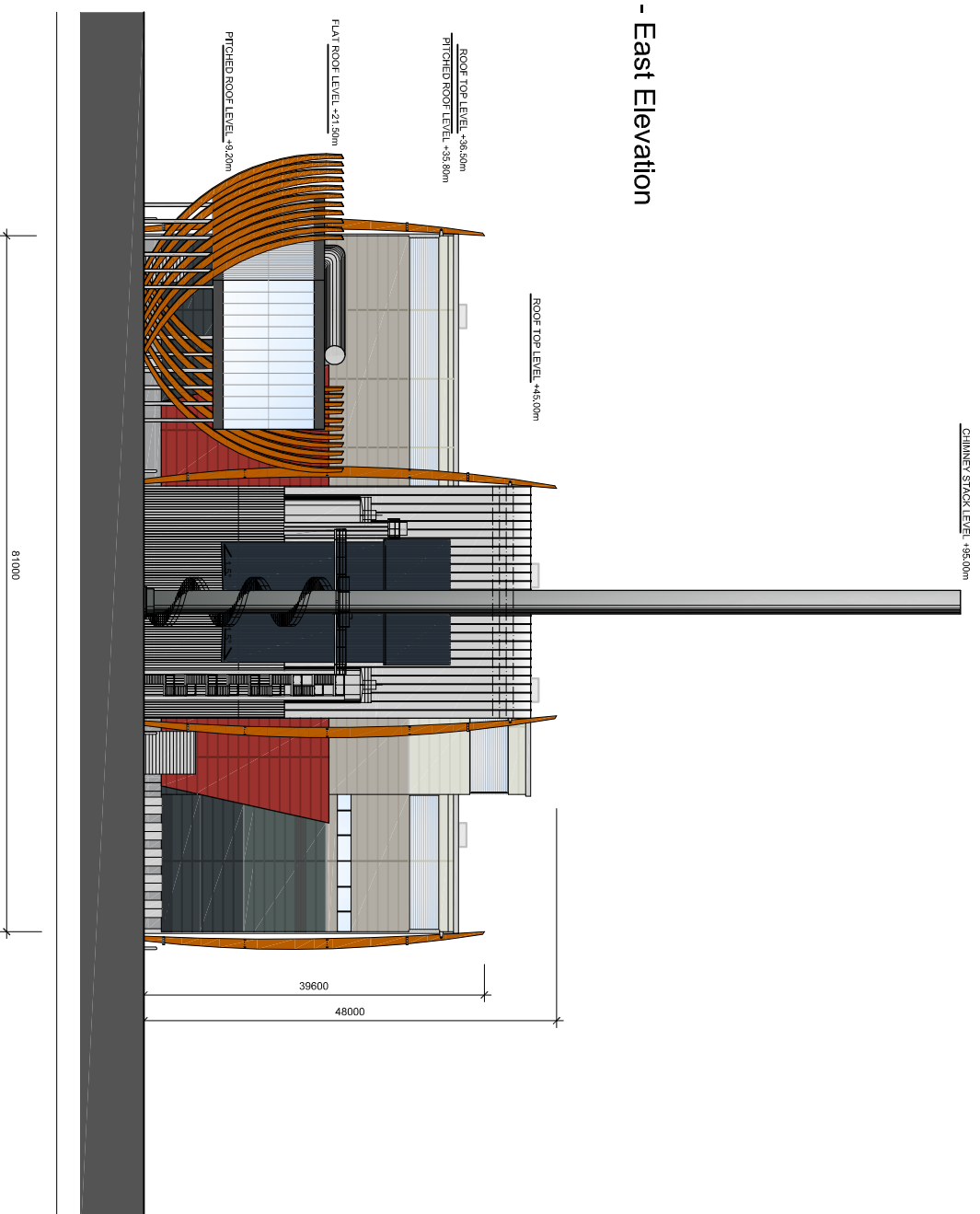
Contractor to SWDWP
Environmental & Planning Consultant
EPC Contractor
Env Con & Plant Engineering GmbH General Designer
Civil Works
Architect
Air Pollution Control
Boiler & Grate
Electrical & Control
Water Steam System

THIS DRAWING MAY BE USED ONLY FOR THE PURPOSE INTENDED AND ONLY WRITTEN DIMENSIONS SHALL BE USED

ARCHITECTURAL MATERIAL NOTES :

1. **ROOF**
Kadzip Standing Seam Composite roofing system with stucco embossed finish 1.2mm gauge. Radius at eaves to be 2.5m and Kingspan Topdeck Single Ply PVC membrane roof deck finished in non standard colour to match wall cladding.
2. **WALLS/VERGE/EAVES/OPENING SURROUNDS**
Kingspan Lagspan micro ins panel with XPS core external coating and Kingspan K15K15 membrane on top. Colour to be selected from the following:
Grey Cladding (from top to bottom) – Anthracite RAL 7016/ Merin Grey RAL 180 40 06/ Casswing Grey RAL 080 70 05/ Grey White RAL 9002
Coloured Cladding – Bottle Green RAL 6007/ Midnight Blue RAL 5008/ Russel Red RAL 3013 and
Kadzip Standing Seam Composite roofing system with stucco embossed finish. 1.2mm gauge.
Trapezoidal cladding either Midnight Blue RAL 5008 / Midgrey RAL 7047
3. **PUNTH**
Precast concrete panels with local stone colour pigmentation.
4. **CHIMNEY STACK**
Painted steelwork, dark grey at base and graduated to light grey at apex.
5. **GLAZING**
Administration Block – Kommer AA100 50mm curtain walling with dry jointed facade system.
6. **FRBS**
Weathered steel and stainless steel fixings.

North - East Elevation



NOTES

Revision Details	By	Date	Suffix

Drawing Status
PLANNING

Job Title
**EFW CHP FACILITY
NORTH YARD
DEVONPORT**

Drawing Title
**Proposed
North - East Elevation
Main Building with ACC's**

Scale at A3

Drawn	Approved
MA	AH

Stage 1 check	Stage 2 check	Originated	Date
MA	SL	AH	10.05.11

Drawing Number	Rev
FIGURE 6.2 C	

