

Creating a monument to land and time; a token from MVV to the community in remembrance of the past, acknowledging our engagement to the present and looking towards the future; marking a new chapter in the visual identity of the landscape and reputation of the town.



Historically, sea barges travelled up to the Old Mill at Weston Mill Village to collect produce for export. MVV now stands on the same site, importing residual waste and turning it into clean energy, providing a long-term solution to the modern age of over production on a mass scale; which has devastating effects on the environment. The processes occurring on this site, serve as an example of how best to manage the UK's waste and reduce the extremely harmful effects that landfills have on our surroundings; the sculpture will pay homage to this solution.

The geometric constructional aspect, marks not only the naturally occurring fractal and algorithmic construct elements in nature, but also represents man's own interactions with the environment, causing the shapes within the sculpture to take a mutated form, akin to a computer glitch. The colours too, oppose their surroundings whilst inducing natural rusts, patinas and textures, with a nod to crystal and rock-like formations.

Using recycled materials sourced from local reclamation yards, recycling centres, landfill and waste aggregate donated from MVV.

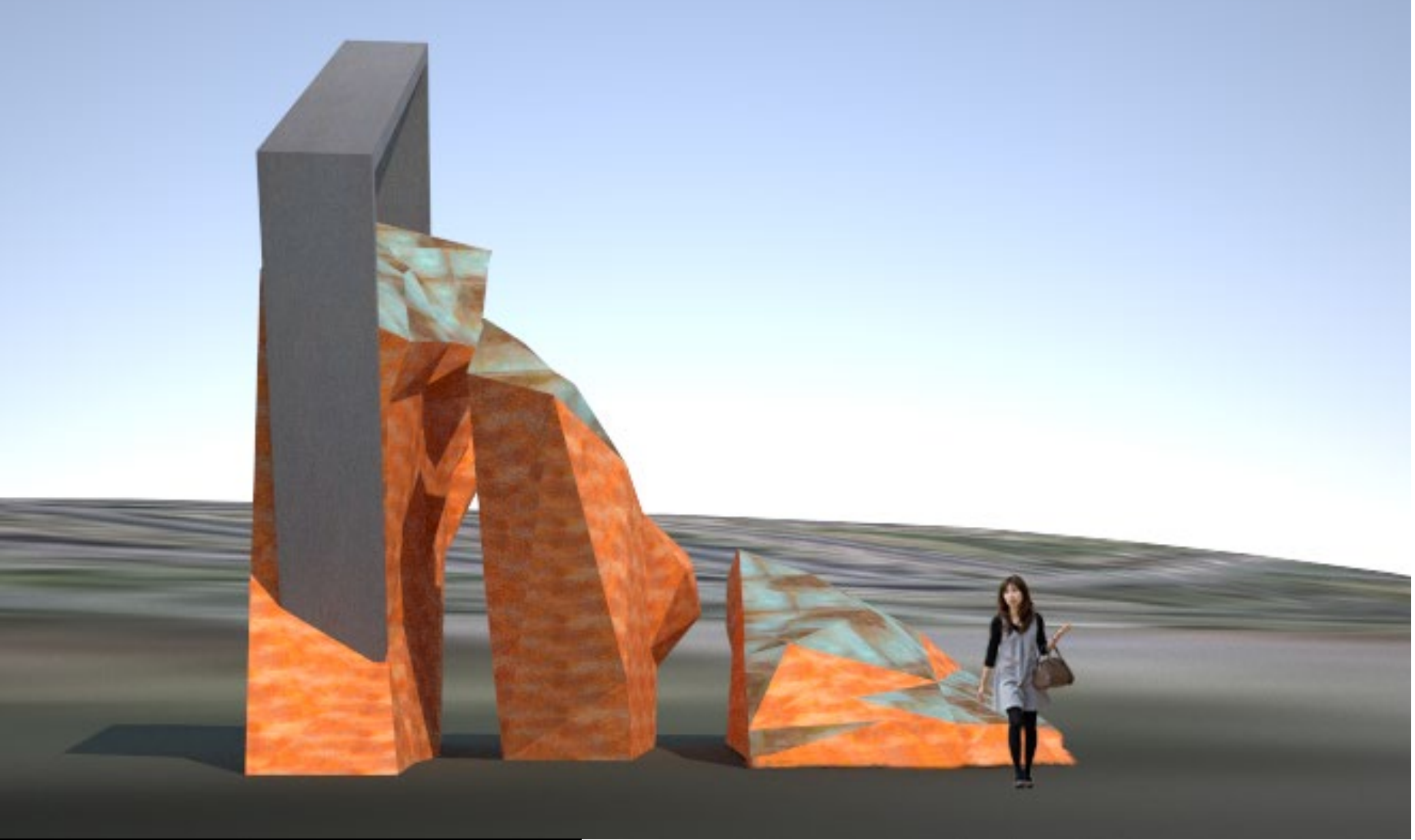
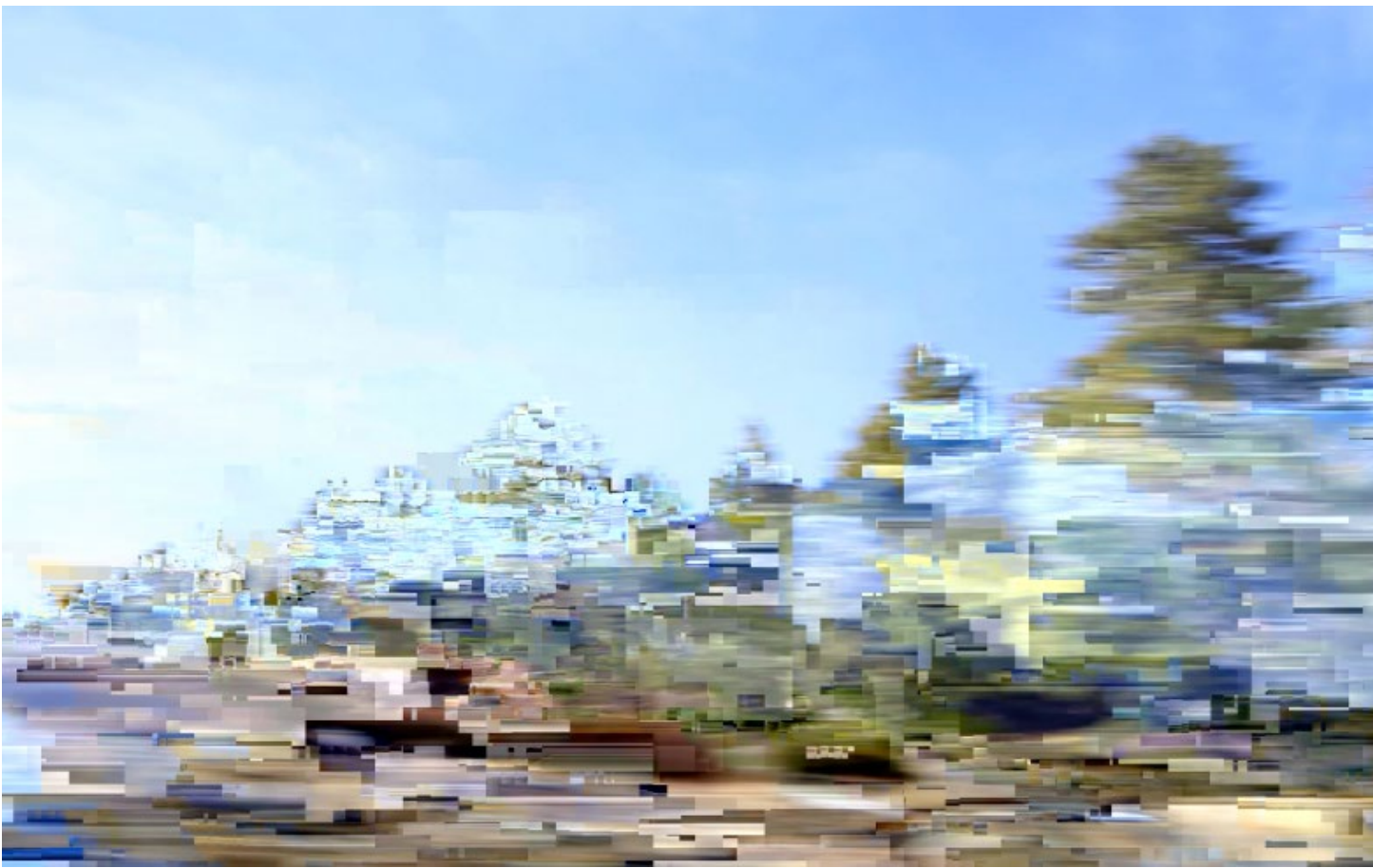
Textures and colours will evolve over time through weathering and oxidation. The introduction of pigments, salts and metal filings will control how the colours will alter elements of the sculpture.



Rock Archway, Porthcothan, Cornwall



Thurlestone Rock, Plymouth coast



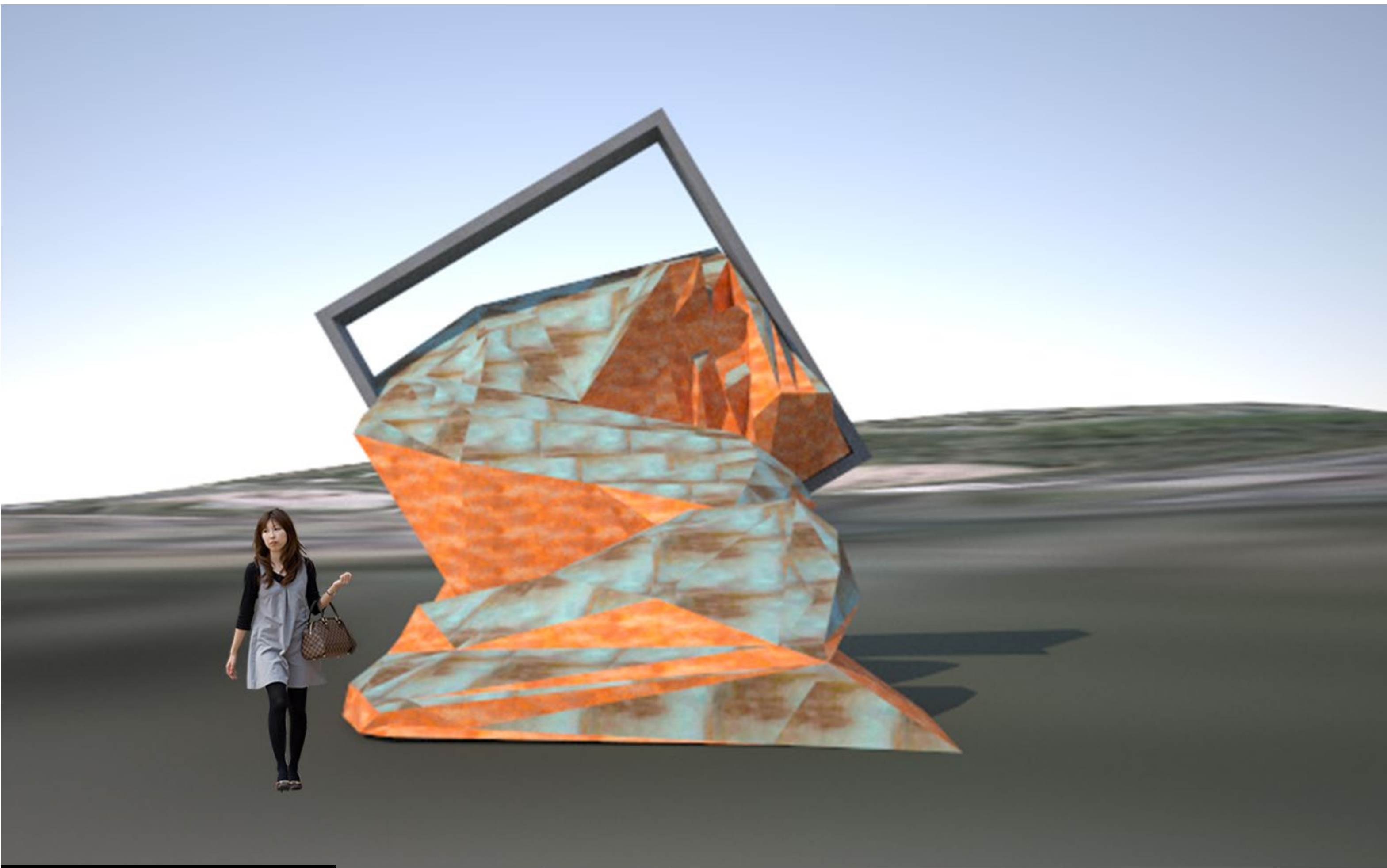
example model, left view

My idea is to construct a three-dimensional landscape painting, framed to reveal the hills behind it. The portal-like element evokes the notion of time perspective; the alternate landscape coupled with the real one behind, shows us looking to the past, present and future. It represents shifts in the landscape, due to natural occurrences, such as weathering and erosion, as well as repercussions from man-made endeavours, such as farming, mining and building. It engages the viewer to consider humankind's impact on the environment, whether it be changes implemented for better or worse, mistakes or mindful inventiveness.

Reinforcing the idea of time perspective, the sculpture will fragment from various vantage points.

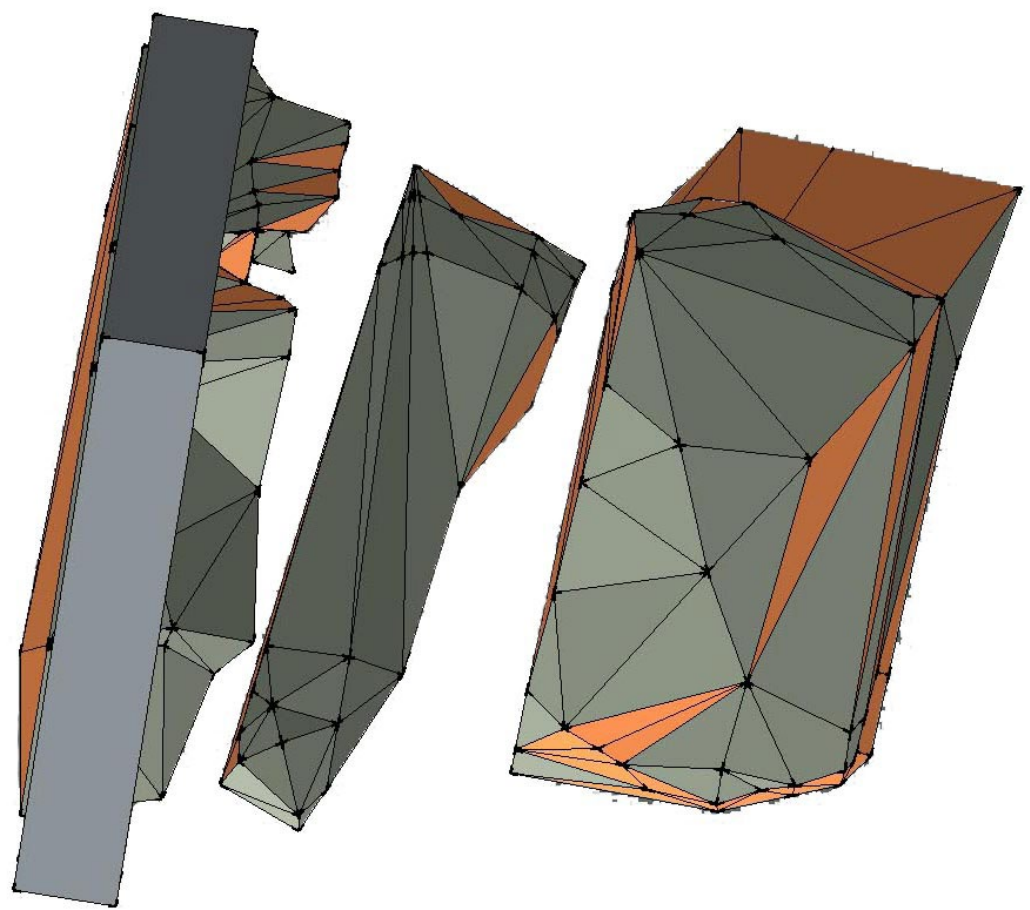
The three components will augment and shift apart upon approaching and leaving the traffic lights at the cross-roads on the St. Budeaux Bypass. Upon stopping at a red light, the horizon will align with the top edge of the piece, becoming a super-imposed element within the parameters of the landscape.

Dimensions: width: ~5.20 m
length: ~6.50 m
height: ~6.80 m
weight: ~2,300 Kg

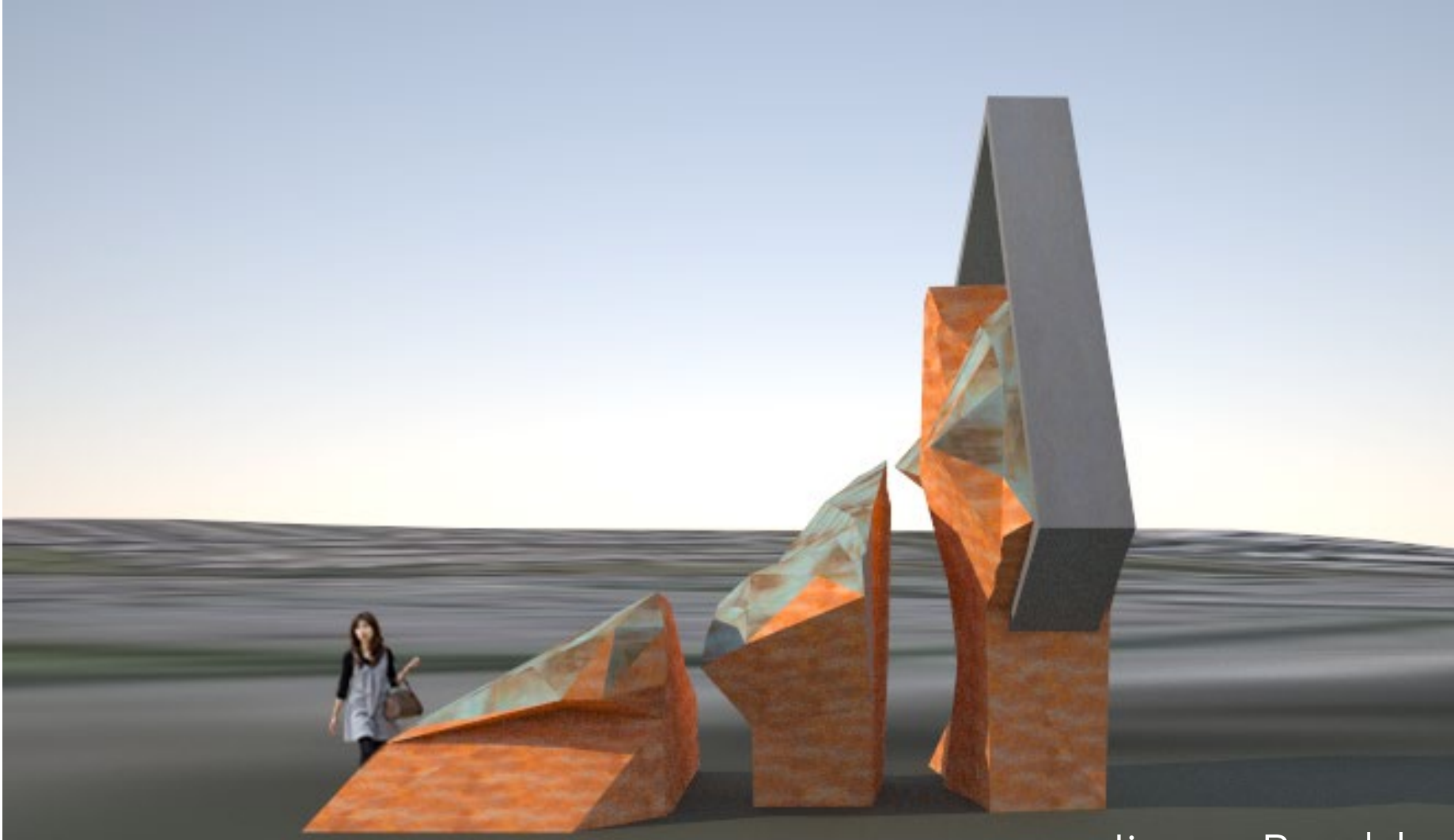


example model, front view

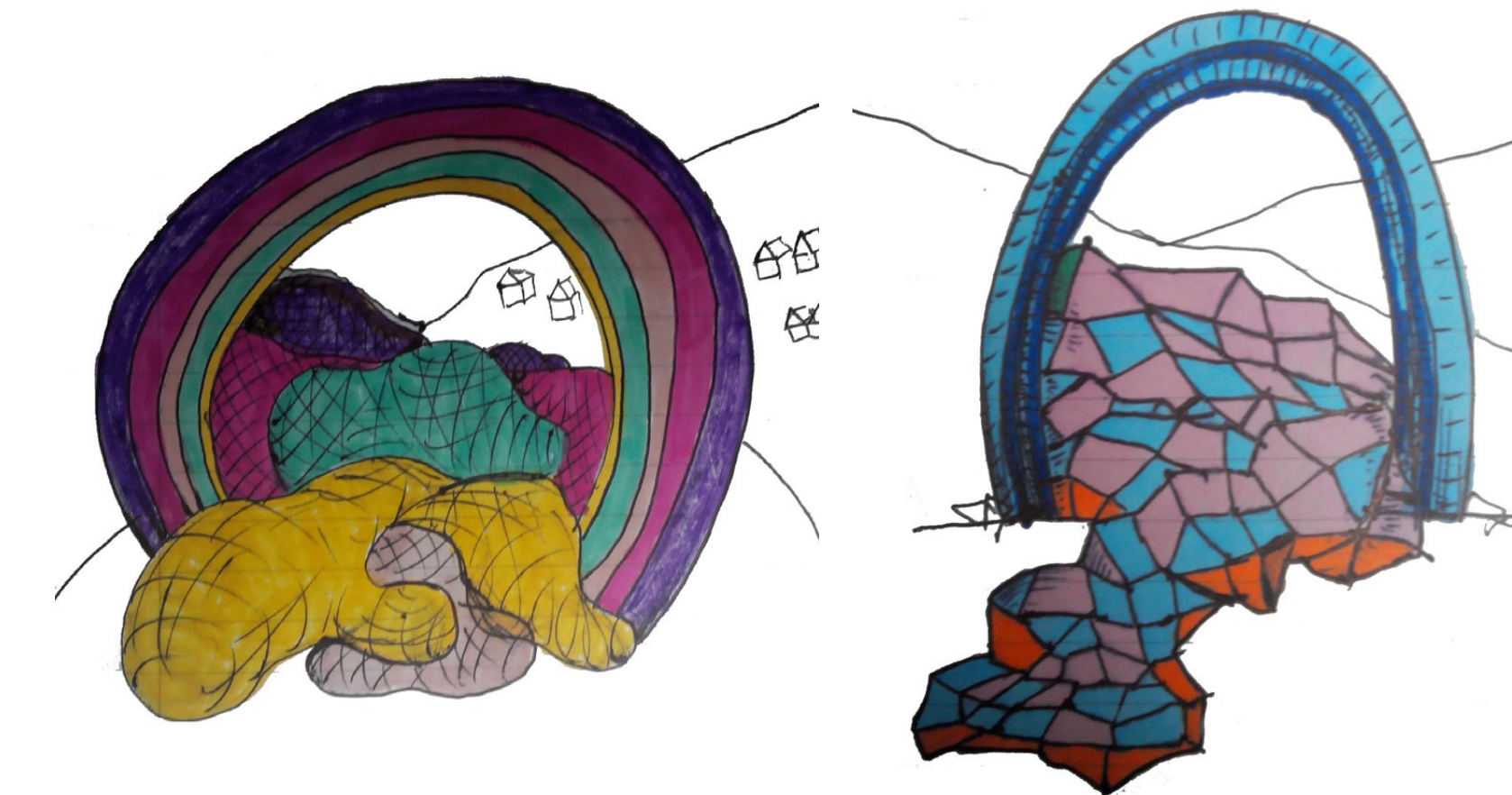
aerial view revealing individual components and potential pathways



example model, right view



Jimmy Bumble



Preliminary sketches

inspiration for colours / textures



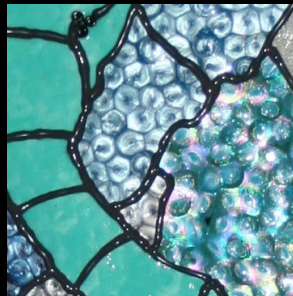
copper verdigris



blue steel



corroding rusty concrete



translucent melted plastic



verdigris patina



blue glass aggregate



iron filing rust on concrete



verdigris turquoise



blue glass aggregate



rusted steel