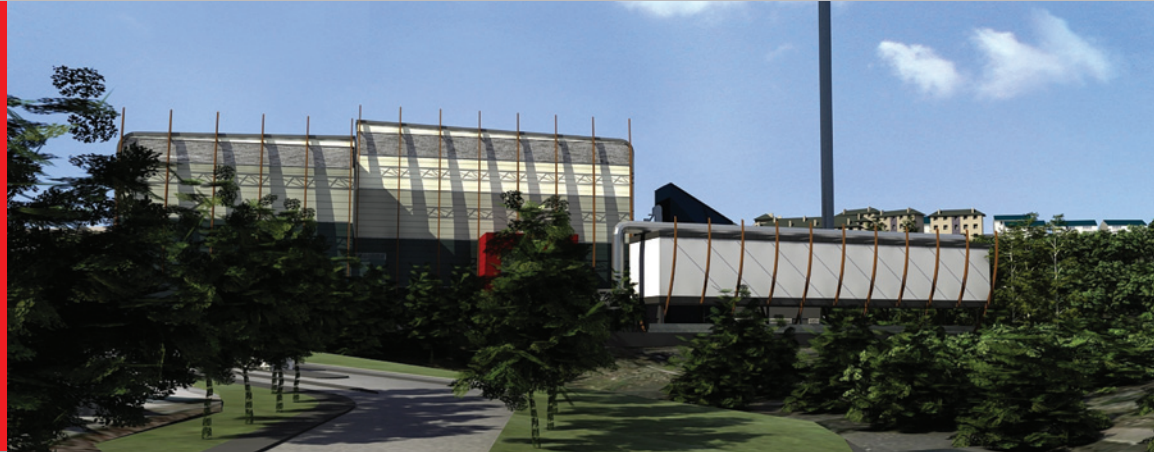




# North Yard Construction News

**What will  
happen on  
site up to  
spring 2012?**



Local residents will have already seen some site investigation works at the North Yard site in November and December 2011, when a number of test piles were drilled to confirm the condition of the ground where MVV is intending to build the Energy from Waste plant.

The test piling has now finished and the results have confirmed the design basis for the piling. However, before MVV can start construction on the main site, a number of other preliminary works need to be carried out.

These works are needed to separate the site of the Energy from Waste plant from the rest of the Naval Base. This will help avoid delays and other access complications associated with the Naval Base's security procedures. Activities include new security fencing between the Naval Base land and the site and the construction of a new access road along the edge of the existing car park adjacent to Wolseley Road.

The aerial view on the next page shows the main areas where construction activities will be happening between February and May 2012.

## Welcome to the first edition of North Yard Construction News

**Dear Reader**, this is the first edition of North Yard Construction News, published by MVV Environment Devonport Limited. As you may have heard, the Planning Committee of Plymouth City Council has approved plans by MVV to build an Energy from Waste plant at Devonport North Yard. The decision marked a milestone in the development of our project after three years of detailed planning and in depth discussion.

Now that the planning permission has been granted we are preparing to start the preliminary works which are explained in greater detail in this newsletter. However, these early works are only the beginning of a construction process that will end in 2014 when we start operating the Energy from Waste plant. We will inform you regularly about the progress and the upcoming activities on site through this and future newsletters.

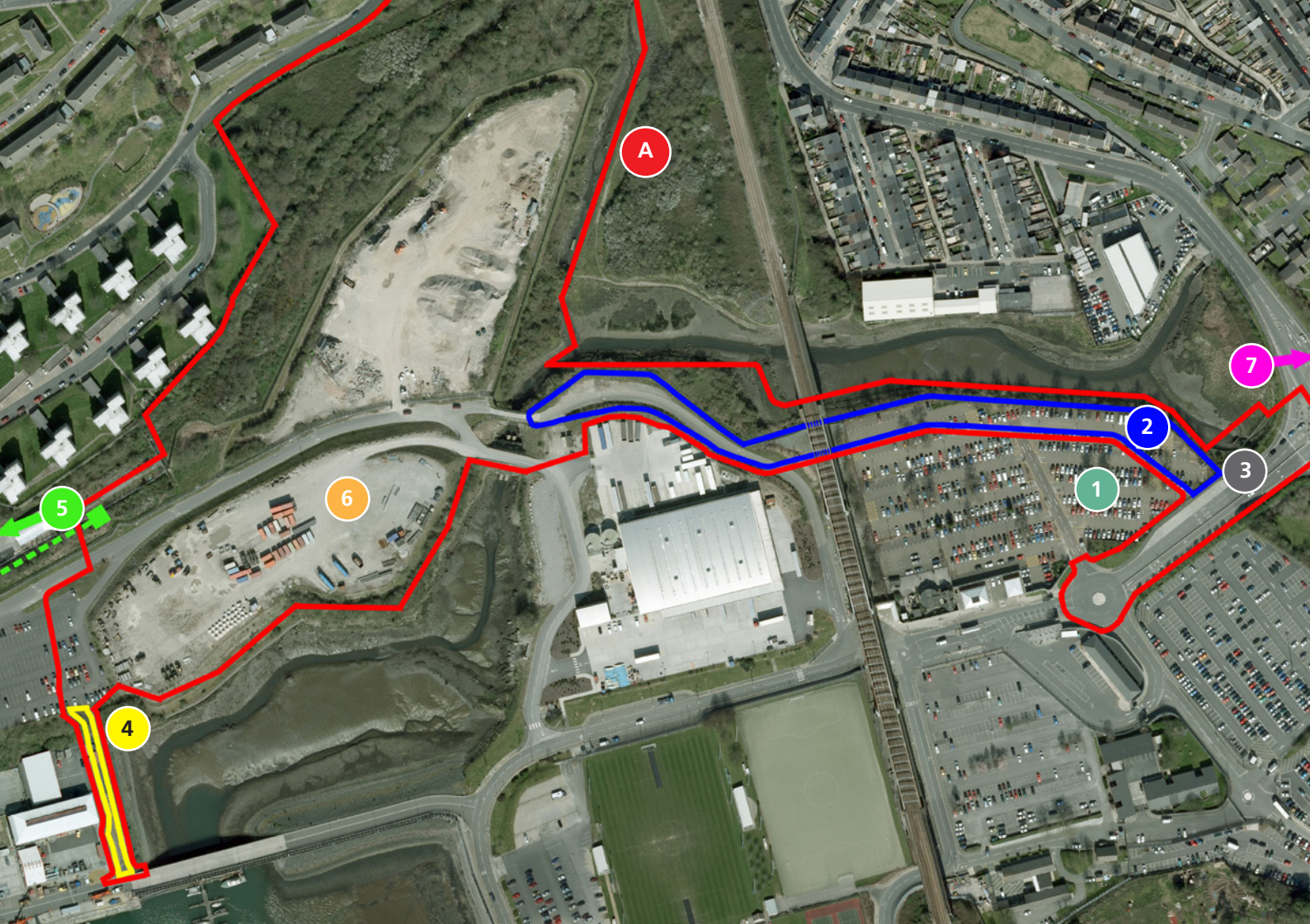
MVV is doing everything reasonable to minimise any nuisance from the works and will comply with the planning conditions set by the Council. These conditions are designed to protect the public and cover issues such as working hours and noise. We will use low noise construction plant whenever possible and implement a noise and water monitoring regime and report regularly to the Council.

MVV has always maintained an "open-door" policy and engaged with the community through a variety of channels, and this will continue. If you want to ask questions about the development or have comments on it, you can contact us at any time. Our contact details are at the end of this newsletter.

**Kind regards**, John Wade,  
Construction Director  
of MVV Environment  
Devonport Ltd.







### A. Simplified planning boundary

The red line indicates the planning boundary covering the site works. A new high security fence will be constructed along the southern boundary of the site to separate it from the secure area of the Naval Base.

### 1. Site establishment area for preliminary works

As one of the first measures, MVV will set up an area in the existing MOD car park which will be used for car parking for construction staff, site offices, welfare facilities and storage of plant and equipment.

### 2. Main Access road

The main access road to the site will be constructed along the northern edge of the existing MOD car park passing under the railway viaduct and up to the existing bridge. MVV will also erect noise barriers on the northern edge of the car park to minimise noise from vehicles entering the site.

### 3. Access road junction

A signalised right turn will be created so that vehicles can enter the new access road after passing through the Wolseley Road and Weston Mill Drive junction. This will include a new pedestrian crossing on the Camels Head entrance road.

### 4. Bull Point access road

The Bull Point area of the Dockyard is currently accessed via the North Yard site. Therefore, a new internal dockyard road will be built to the west of the site to enable continued access to the dockyard area at Bull Point from 14 Wharf.

### 5. Construction power supply

Construction sites like the one at North Yard need power supplied by a cable to minimise the need for mobile generators on site. This power supply will come from the MOD Bull Point substation via a high voltage underground cable.

### 6. Site establishment area for main works

Although MVV will not start construction on the main site before May 2012, an area will be set up on the top of table top mountain which will be used for storing equipment, car parking for some construction staff and site offices and welfare facilities during the main works phase.

### 7. A38/A3064 Weston Mill Drive junction

MVV will carry out road safety mitigation measures at the Weston Mill Drive junction of the A38. This includes new safety signs and road markings and the renewal of existing high friction road surfacing.

## How to get in touch

**If you would like to speak to someone face to face and find out more about what we are doing, we would be delighted to meet you at our office at:**

Unit 10, Scott Business Park, Beacon Park Road, Plymouth PL2 2PQ.  
The office is open on weekdays between 10 am and 4 pm.

Alternatively, you can speak to us on the phone: 01752 565 412.

If you have access to the internet, you can find out more by visiting:

[www.mvvuk.co.uk](http://www.mvvuk.co.uk) for more information on MVV and for copies of reports and documents.

Alternatively, you can write to us at the above address or send us an email to [info@mvvuk.co.uk](mailto:info@mvvuk.co.uk)