



North Yard Construction News

Forthcoming activities on site

The end is nearly in sight for the main construction works. As we progress through the autumn months the project will move away from major construction activities and into a period of completion and testing as well as some landscaping of the site and surrounding area. The completion and testing activities will mainly take place inside the buildings and on the whole will not be noticeable from outside. The landscaping works will include the creation of a wildlife pond outside the northern boundary fence at the edge of Blackie Woods and some planting around the site and access road.

Other construction works that will be continuing into next year, include final surfacing and marking of roads which will involve concrete being poured and other construction vehicles associated with road construction and finishing.

Images from our site webcam can be found on our website at <http://mvvuk.co.uk> on the SWDWP pages.

The webcam photograph on the back of this newsletter shows in more detail finished work as well as preparation for the commissioning.



This aerial photograph was taken in July this year and illustrates progress on site as seen by our neighbours in Barne Barton. The recent photograph on the reverse gives more detail.

Welcome to the sixth edition of North Yard Construction News

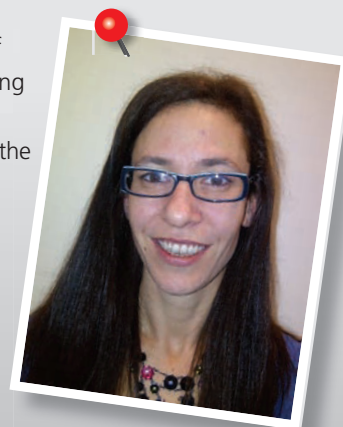
Dear Reader, In line with our policy of keeping you informed, this edition of our newsletter will focus on forthcoming activities and the transition from construction to commissioning works. The building itself is now substantially enclosed with the final cladding complete on much of the structure. The last part of the facility to be completed is the air cooled condensers to the north east of the site, which will turn the steam back into water ready to go around the process again. I continue to be available for face-to-face discussions on a monthly basis at the community drop-in session in Barne Barton. We also continue to hold evening liaison meetings approximately four times a year and these are advertised on our website.

At the end of July we were delighted to open up the play area at the top of Savage Road and most of the wooded area known as Blackie Woods. These natural spaces can be enjoyed by the local community, and form part of a wider education programme relating to waste, energy and the environment.

To summarise key milestones since our last newsletter, the steam turbine and generator have now been installed; the boiler itself has passed its pressure test and been duly certified; insulation of the boiler and associated pipework

is substantially done; electrical wiring has been installed through much of the building and the main electrical connection has successfully been made, which will give power to the plant; work on the roof gardens is nearly finished and the brown roof on top of the workshop and stores is complete.

Towards the end of 2014, commissioning is due to begin. This process marks the start of 24-hour a day operations.



We will also start accepting waste deliveries to the Facility during this phase within the Facility Opening Hours, which are:

Monday to Friday	08:00 - 19:00
Saturday	08:00 - 18:00
Sunday / Bank Holidays (except Christmas Day)	10:00 - 16:00
Boxing Day	10:00 - 16:00
Christmas Day	Closed

Any changes to waste collection days for Plymouth residents will be notified separately by Plymouth City Council as the waste collection authority.

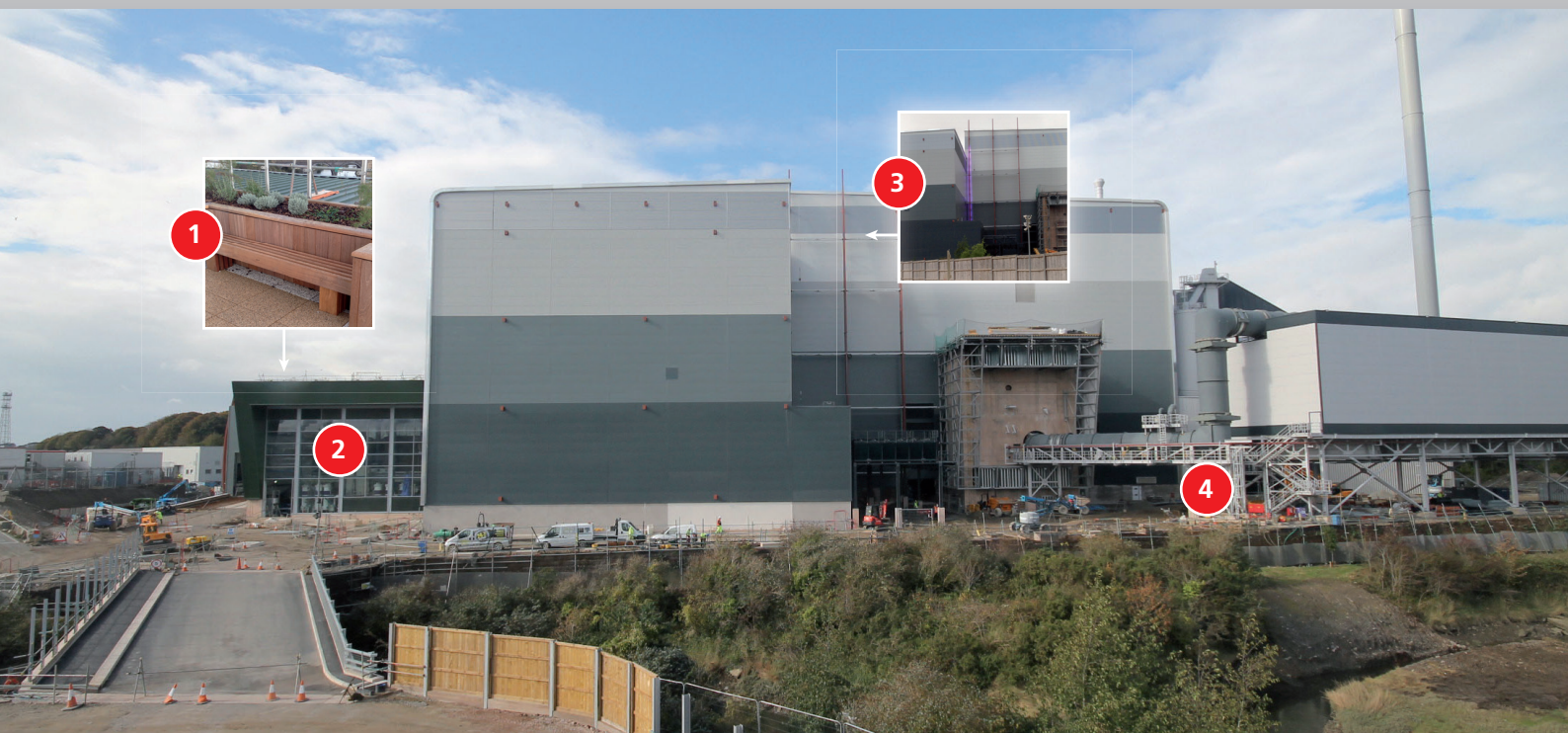
The first stage of commissioning involves lighting the boiler using diesel oil and blowing steam through the pipework. No waste will be burnt at this time but steam will be visible from areas of the plant being tested and some emissions may be visible from the chimney. We anticipate that steam blowing will be seen and heard by local residents and will therefore inform people beforehand by letter, as well as on our website.

Following this, waste will be fed onto the grate; then the oil burners can be switched off. During this period the steam circuits will be tested and the combustion control system adjusted. Steam will also be fed through the turbine for the first time and wisps of steam may still appear from places where testing is being done. The next stage of commissioning will involve the generation of electricity for the first time, fine tuning of all equipment and shut down of the plant under emergency conditions to ensure this can be done safely. Finally, the plant will be prepared for continuous operation with waste being fed on to the grate, confirmation of compliance with the Environmental Permit and electricity and steam being generated for use.

The photograph below gives more detail, as viewed from the direction of our weighbridge, with some explanation beneath. Full contact details are supplied at the end of this newsletter for any comments or questions; please note the new postal address and timings for the community drop-in session.

Kind regards,

Jane Ford, Community Liaison Manager



1. Roof garden: This space will be available for use as part of a site tour. Visitors can enjoy the views, eat their lunch and find out about the history of the dockyard as well as learning about waste.

2. Water treatment plant: This cleans the water before it goes into the pipes of the boiler, to prevent any impurities from damaging the inside of the boiler.

3. Ribs: These are part of the architectural enhancements, included to improve the look of the building.

4. Silencer: This will be installed especially for the steam blowing activity to minimise noise disturbance. During steam blowing, white clouds of water vapour will be released from the silencer.

How to get in touch

If you would like to speak to someone face to face and find out more about the project, our Community Liaison Manager is available on the last Tuesday of every month at Tamar View Resource Centre, Barne Barton, between 9:00 and 11:00.

Site visits can be arranged by contacting Jane Ford at the site office on: 01752 393156 or via her mobile: 07876 135632. The postal address of the plant is: Devonport EfW CHP Facility, Creek Road, Plymouth, PL5 1FL.