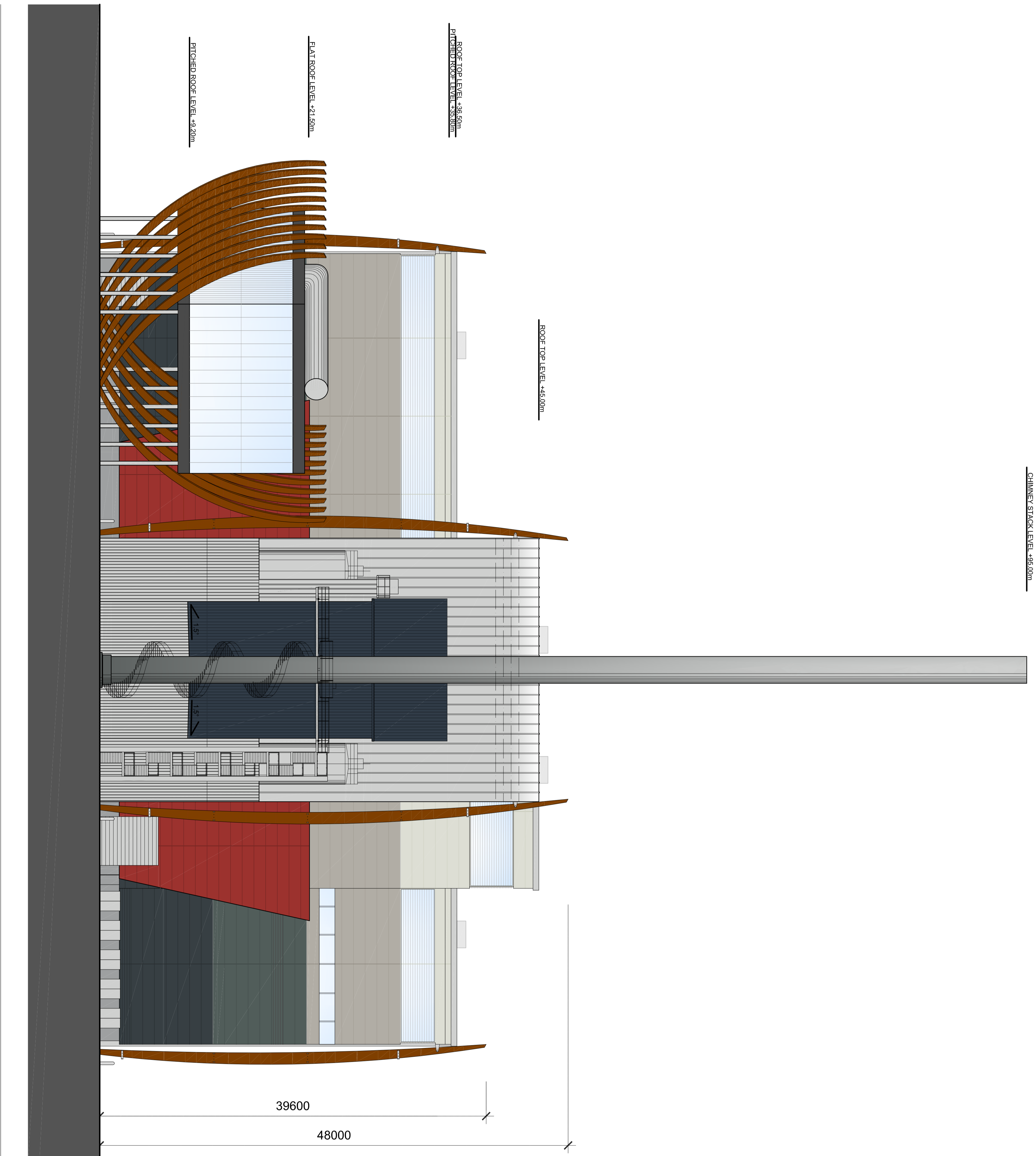


**NOTES**

- ARCHITECTURAL MATERIAL NOTES :**
- ROOF**  
 Roofing: Standing Seam Composite roofing system, with stainless embossed finish. 12mm parapet coping on cover to be 200mm wide and finished with stainless steel coping. 12mm parapet coping on cover to be 200mm wide and finished with stainless steel coping. 12mm parapet coping on cover to be 200mm wide and finished with stainless steel coping.
  - WALLS/FACED/CLADDING/SCREENING SUBSTRATES**  
 Masonry: Sandstone masonry to profile with X17 fine external coating and grey chalking (from top to bottom) - Anstonia, NLS 7016/ Marlin NLS 4022. 150 (or 100) of S17 Cladding (NLS 509 to 510) Grey Blue. Screening Cladding: 150mm Green NLS 6007/ Multiple Blue NLS 6007 and Standing Seam Composite roofing system with stainless embossed finish. 12mm parapet coping over Multiple Blue NLS 5028 / Marlyn NLS 7027.
  - FURNISH**  
 Finished concrete panels with local stone outdoor specification.
  - CHIMNEY STACK**  
 12mm parapet coping on cover to be 200mm wide and finished with stainless steel coping. 12mm parapet coping on cover to be 200mm wide and finished with stainless steel coping.
  - GLAZING**  
 12mm parapet coping over Multiple Blue NLS 5028 / Marlyn NLS 7027.
  - ROOF**  
 Roofing: Standing Seam Composite roofing system, with stainless embossed finish. 12mm parapet coping on cover to be 200mm wide and finished with stainless steel coping. 12mm parapet coping on cover to be 200mm wide and finished with stainless steel coping.



North - East Elevation

Drawing Title		Proposed North-East Elevation: Main Building with ACC's	
Drawing No.		PA06 C	
Revision Details		By: [Signature] Date: [Blank]	
Drawing Status		[Blank]	
Date		3.05.2011	
Scale		1:1	
Author		[Blank]	
Checked		[Blank]	
Approved		[Blank]	