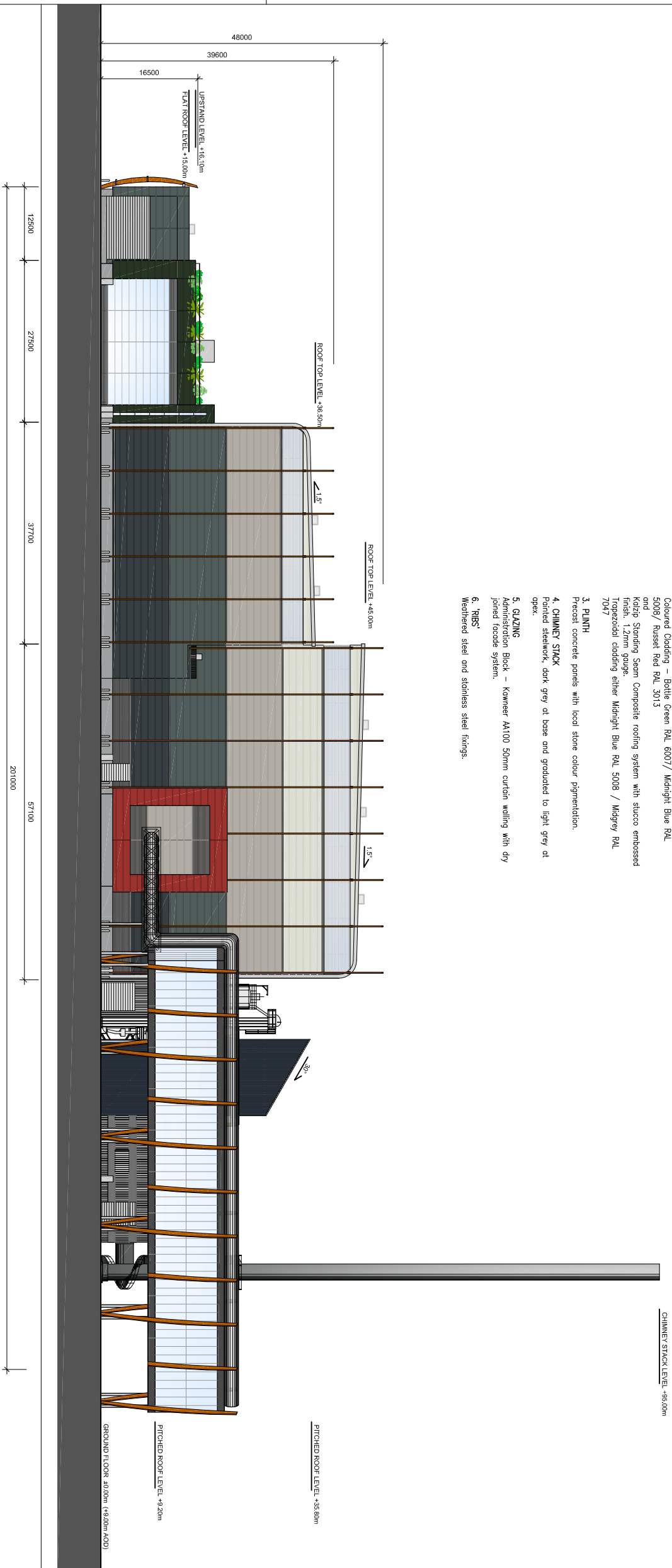


THIS DRAWING MAY BE USED ONLY FOR THE PURPOSE INTENDED AND ONLY WRITTEN DIMENSIONS SHALL BE USED

NOTES

ARCHITECTURAL MATERIAL NOTES :

1. **ROOF**
Kaltz Standing Seam Composite roofing system with stucco embossed finish, 1.2mm gauge. Radius at eaves to be 25mm and Kingspan Topdeck Single Ply PVC membrane roof deck finished in non standard colour to match wall cladding.
2. **WALLS/VERGE/EAVES/OPENING SURROUNDS**
Kingspan Longspan micro rib panel with XL Forte external coating and white polyester internal coating. Spans up to 8m
Grey Cladding (from top to bottom) – Anthracite RAL 7016/ Merlin Grey RAL 180 40 06/ Gooswing Grey RAL 080 70 05/ Grey White RAL 9002
Coloured Cladding – Battle Green RAL 6007/ Midnight Blue RAL 5008/ Russet Red RAL 3013
and
Kaltz Standing Seam Composite roofing system with stucco embossed finish, 1.2mm gauge.
Trapezoidal cladding either Midnight Blue RAL 5008 / Midgrey RAL 7047
3. **PLINTH**
Precast concrete panels with local stone colour pigmentation.
4. **CHIMNEY STACK**
Painted steelwork, dark grey at base and graduated to light grey at apex.
5. **GLAZING**
Administration Block – Kameer A4100 50mm curtain walling with dry jointed facade system.
6. **RIBS**
Weathered steel and stainless steel fixings.



South - East Elevation

Revision Details	By	Date	Suffix

Drawing Status
PLANNING

Job Title
**EFW CHP FACILITY
NORTH YARD
DEVONPORT**

Drawing Title
**Proposed
South-East Elevation
Main Building with ACC's**

Scale at A3
NTS

Drawn	Approved
MA	AH

Stage 1 check	Stage 2 check	Originated	Date
MA	SL	AH	10.05.11

Drawing Number
FIGURE 6.2B



Contractor to SWDWP
Environmental & Planning Consultant
EPC Contractor
Env Con & Plant Engineering GmbH General Designer
Civil Works
Architect
Air Pollution Control
Boiler & Grate
Electrical & Control
Water Steam System