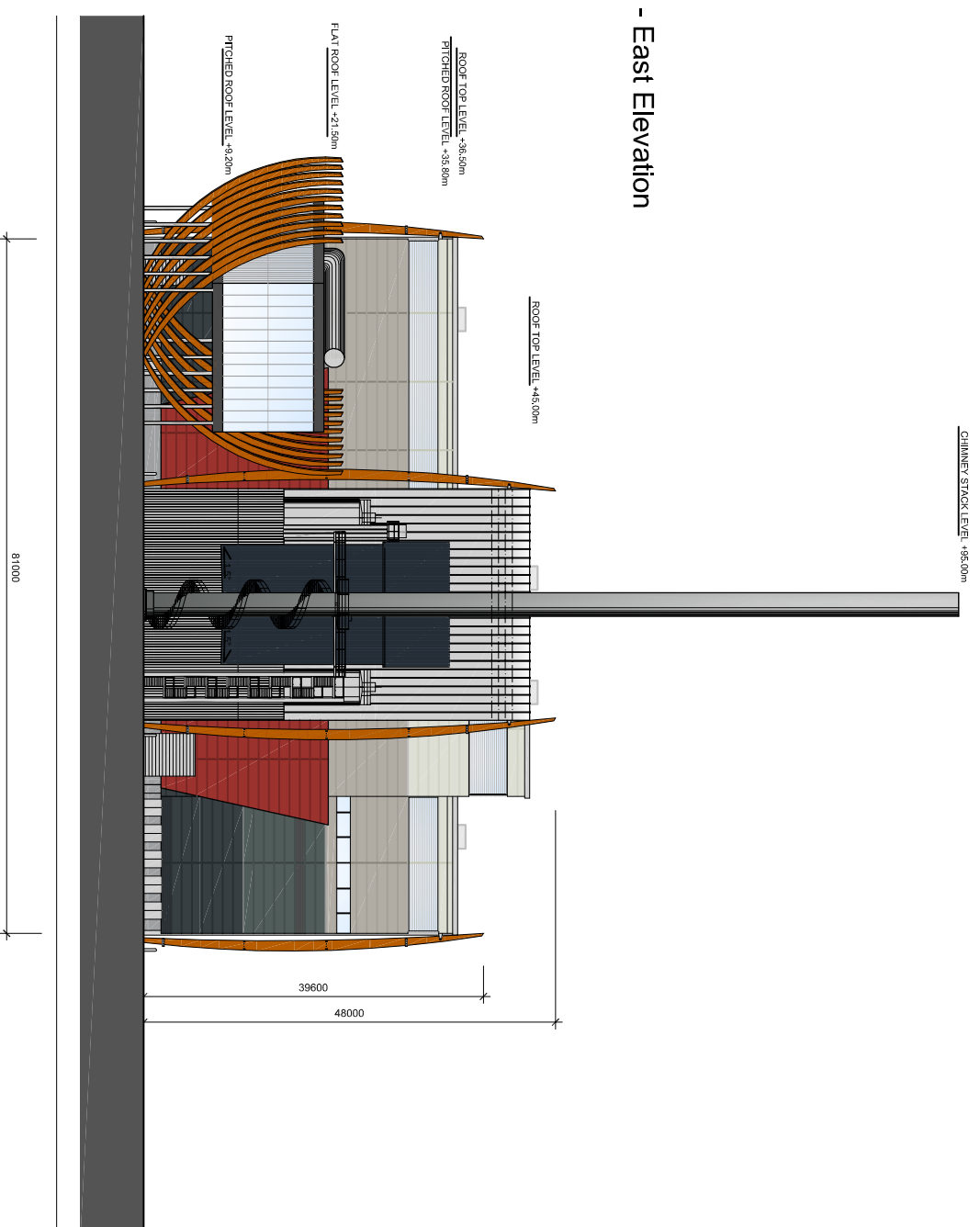


**ARCHITECTURAL MATERIAL NOTES :**

1. **ROOF**  
Kadzip Standing Seam Composite roofing system with stucco embossed finish 1.2mm gauge. Radius at eaves to be 2.5m and Kingspan Topdeck Single Ply PVC membrane roof deck finished in non standard colour to match wall cladding.
2. **WALLS/VERGE/EAVES/OPENING SURROUNDS**  
Kingspan Lathspan micro ins panel with 2x70mm x 25mm external cooling and Kingspan Lathspan micro ins panel with 2x70mm x 25mm internal insulation. Grey Cladding (from top to bottom) – Anthracite RAL 7016/ Merin Grey RAL 180 40 06/ Casswing Grey RAL 080 70 05/ Grey White RAL 9002 Coloured Cladding – Bottle Green RAL 6007/ Midnight Blue RAL 5008/ Russel Red RAL 3013 and
3. **PUNTH**  
Kadzip Standing Seam Composite roofing system with stucco embossed finish. 1.2mm gauge. Trapezoidal cladding either Midnight Blue RAL 5008 / Midgrey RAL 7047
3. **PUNTH**  
Precast concrete panels with local stone colour pigmentation.
4. **CHIMNEY STACK**  
Painted steelwork, dark grey at base and graduated to light grey at apex.
5. **GLAZING**  
Administration Block – Kommer A4100 50mm curtain walling with dry jointed facade system.
6. **FRBS**  
Weathered steel and stainless steel fixings.

**North - East Elevation**



THIS DRAWING MAY BE USED ONLY FOR THE PURPOSE INTENDED AND ONLY WRITTEN DIMENSIONS SHALL BE USED

**NOTES**

Revision Details	By	Date	Suffix

Drawing Status  
**PLANNING**

Job Title  
**EFW CHP FACILITY  
NORTH YARD  
DEVONPORT**

Drawing Title  
**Proposed  
North - East Elevation  
Main Building with ACC's**

Scale at A3

Drawn	Approved
MA	AH

Stage 1 check	Stage 2 check	Originated	Date
MA	SL	AH	10.05.11

Drawing Number	Rev
<b>FIGURE 6.2 C</b>	

