

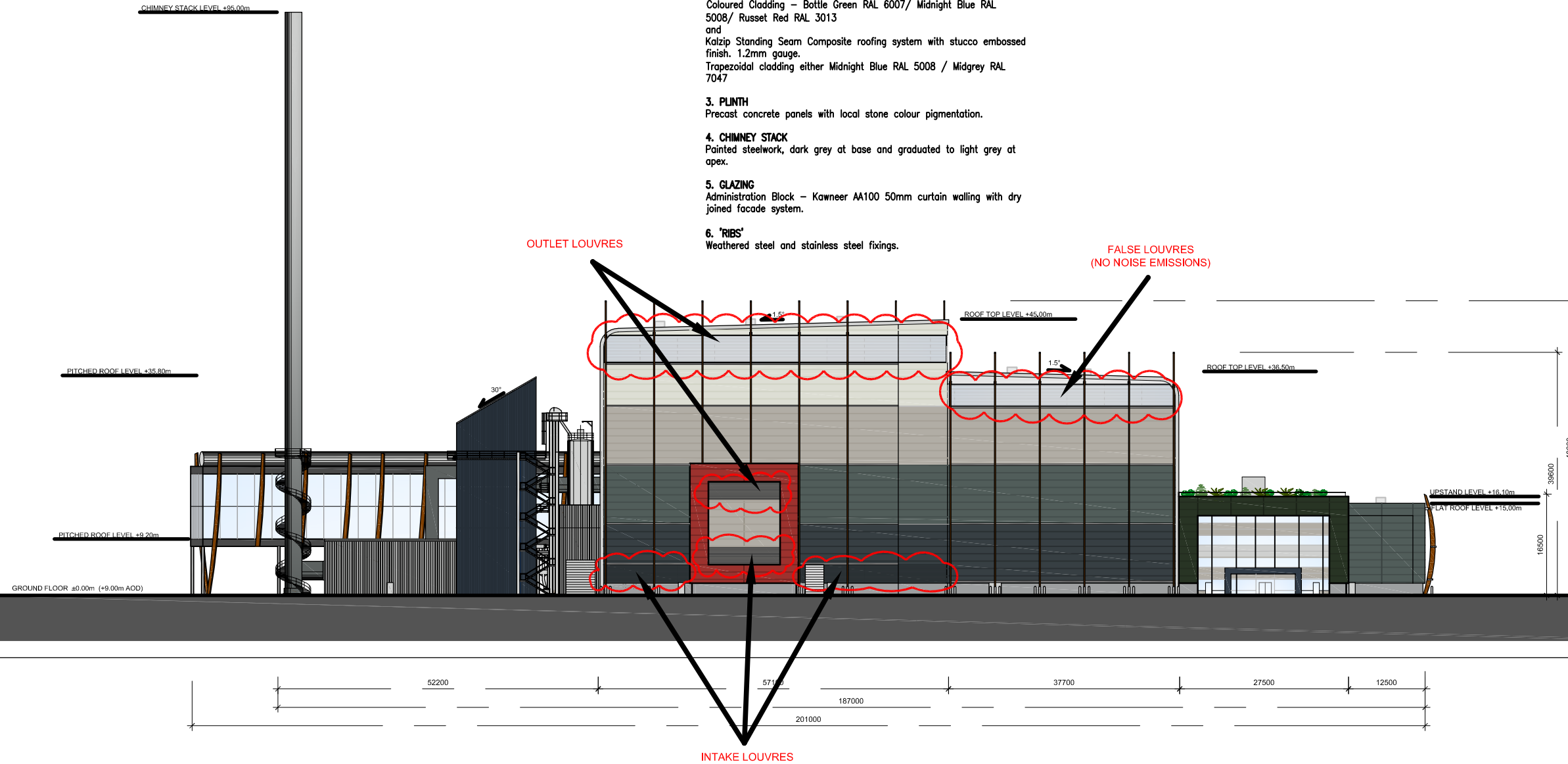
MATERIAL NOTES :

- 1. ROOF**
Kalzip Standing Seam Composite roofing system with stucco embossed finish 1.2mm gauge. Radius at eaves to be 2.5m and Kingspan Topdeck Single Ply PVC membrane roof deck finished in non standard colour to match wall cladding.
- 2. WALLS/VERGE/EAVES/OPENING SURROUNDS**
Kingspan Longspan micro rib panel with XL Forte external coating and white polyester internal coating. Spans up to 8m
Grey Cladding (from top to bottom) – Anthracite RAL 7016/ Merlin Grey RAL 180 40 06/ Gooswing Grey RAL 080 70 05/ Grey White RAL 9002
Coloured Cladding – Bottle Green RAL 6007/ Midnight Blue RAL 5008/ Russet Red RAL 3013
and
Kalzip Standing Seam Composite roofing system with stucco embossed finish. 1.2mm gauge.
Trapezoidal cladding either Midnight Blue RAL 5008 / Midgrey RAL 7047
- 3. PLINTH**
Precast concrete panels with local stone colour pigmentation.
- 4. CHIMNEY STACK**
Painted steelwork, dark grey at base and graduated to light grey at apex.
- 5. GLAZING**
Administration Block – Kawneer AA100 50mm curtain walling with dry joined facade system.
- 6. 'RIBS'**
Weathered steel and stainless steel fixings.

LOCATIONS OF LOUVRES - FOR INFORMATION 14.06.11

THIS DRAWING MAY BE USED ONLY FOR THE PURPOSE INTENDED AND ONLY WRITTEN DIMENSIONS SHALL BE USED

NOTES



Revision Details	By	Date	Suffi
Drawing Status	Check		
PLANNING			
Job Title	EW CHP FACILITY NORTH YARD DEVONPORT		
Drawing Title	Proposed North-West Elevation Main Building with ACC's		
Scale at A3	NTS		
Drawn	MA	Approved	AH
Stage 1 check	MA	Stage 2 check	Originated
			Date
			10.03.11
Drawing Number	FIGURE 6.2A		



Contractor to SWDWP

Environmental & Planning Consultant

EPC Contractor

General Designer

Civil Works

Architect

Air Pollution Control

Boiler & Grate

Electrical & Control

Water Steam System

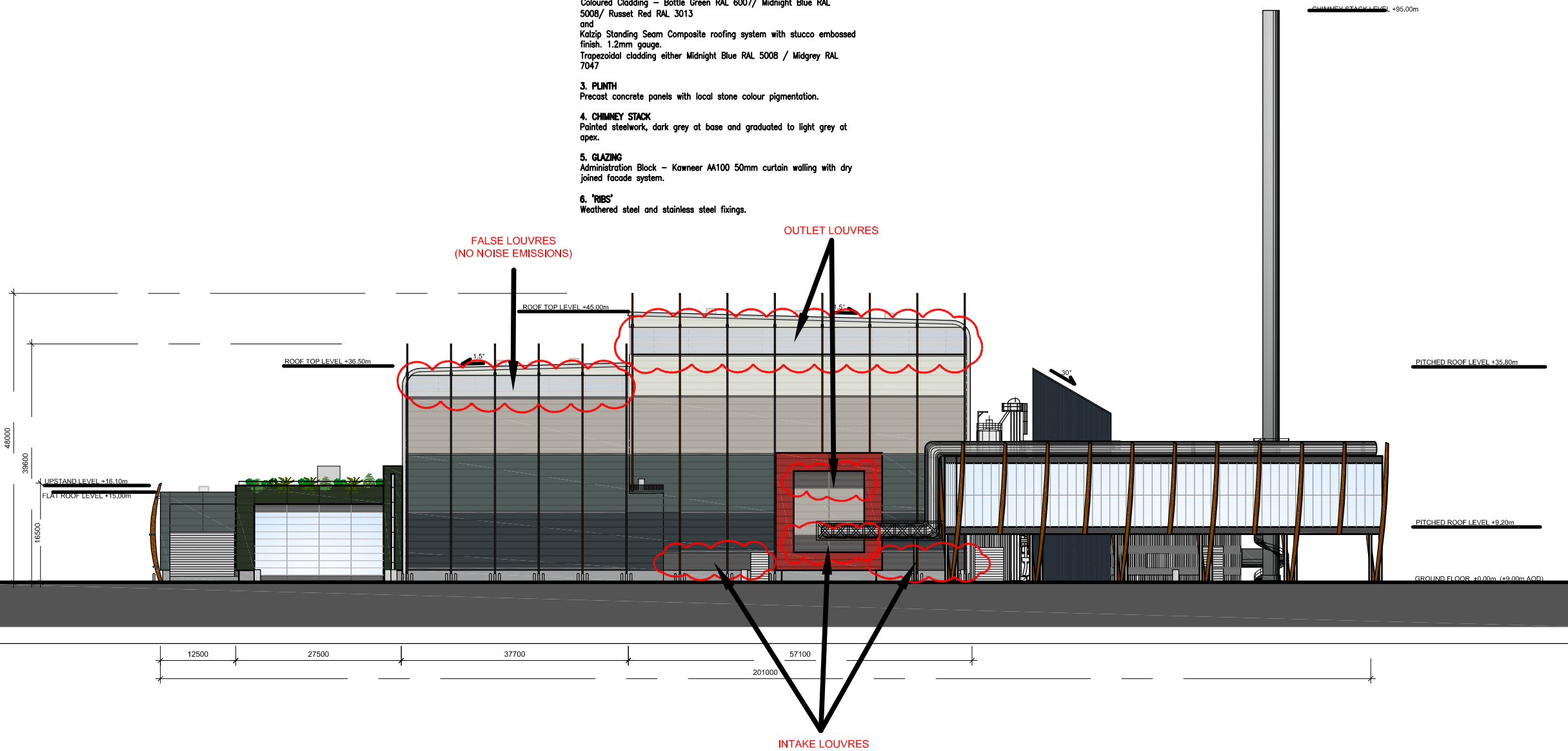
THIS DRAWING MAY BE USED ONLY FOR THE PURPOSE INTENDED AND ONLY WRITTEN DIMENSIONS SHALL BE USED

LOCATIONS OF LOUVRES - FOR INFORMATION 14.06.11

ARCHITECTURAL MATERIAL NOTES :

- 1. ROOF**
Kalzip Standing Seam Composite roofing system with stucco embossed finish 1.2mm gauge. Radius at eaves to be 2.5m and Kingspan Topdeck Single Ply PVC membrane roof deck finished in non standard colour to match wall cladding.
- 2. WALLS/VERGE/EAVES/OPENING SURROUNDS**
Kingspan Longspan micro rib panel with XL Forte external coating and white polyester internal coating. Spans up to 8m
Grey Cladding (from top to bottom) - Anthracite RAL 7016/ Merlin Grey RAL 180 40 06/ Gooswing Grey RAL 080 70 05/ Grey White RAL 9002
Coloured Cladding - Bottle Green RAL 6007/ Midnight Blue RAL 5008/ Russet Red RAL 3013
and
Kalzip Standing Seam Composite roofing system with stucco embossed finish. 1.2mm gauge.
Trapezoidal cladding either Midnight Blue RAL 5008 / Midgrey RAL 7047
- 3. PLINTH**
Precast concrete panels with local stone colour pigmentation.
- 4. CHIMNEY STACK**
Painted steelwork, dark grey at base and graduated to light grey at apex.
- 5. GLAZING**
Administration Block - Kawneer AA100 50mm curtain walling with dry joined facade system.
- 6. 'RIBS'**
Weathered steel and stainless steel fixings.

NOTES



Revision Details	By	Date	Suffi
Drawing Status		Check	
PLANNING			
Job Title			
EW CHP FACILITY NORTH YARD DEVONPORT			
Drawing Title			
Proposed South-East Elevation Main Building with ACC's			
Scale at A3			
NTS			
Drawn	MA	Approved	AH
Stage 1 check	MA	Stage 2 check	Originated
			Date
			10.05.11
Drawing Number			
FIGURE 6.2B			