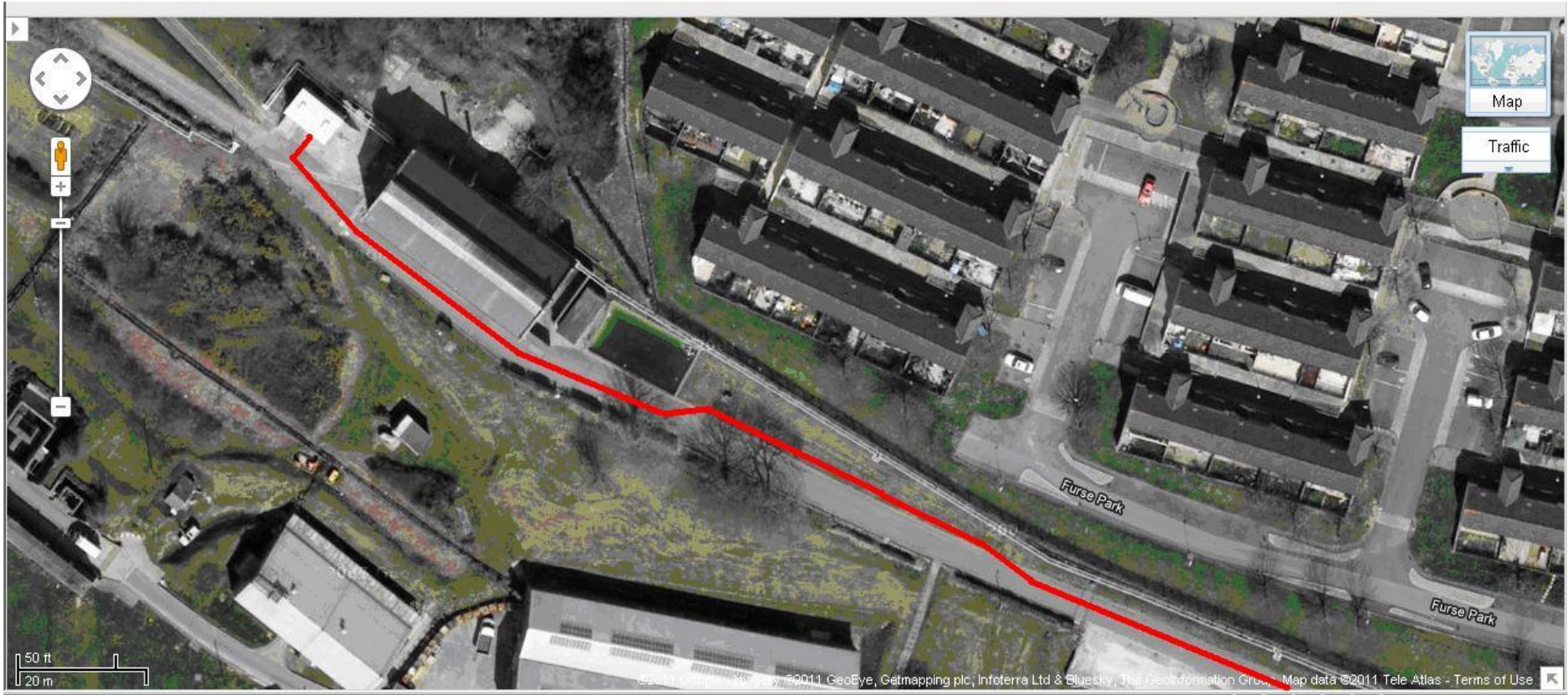


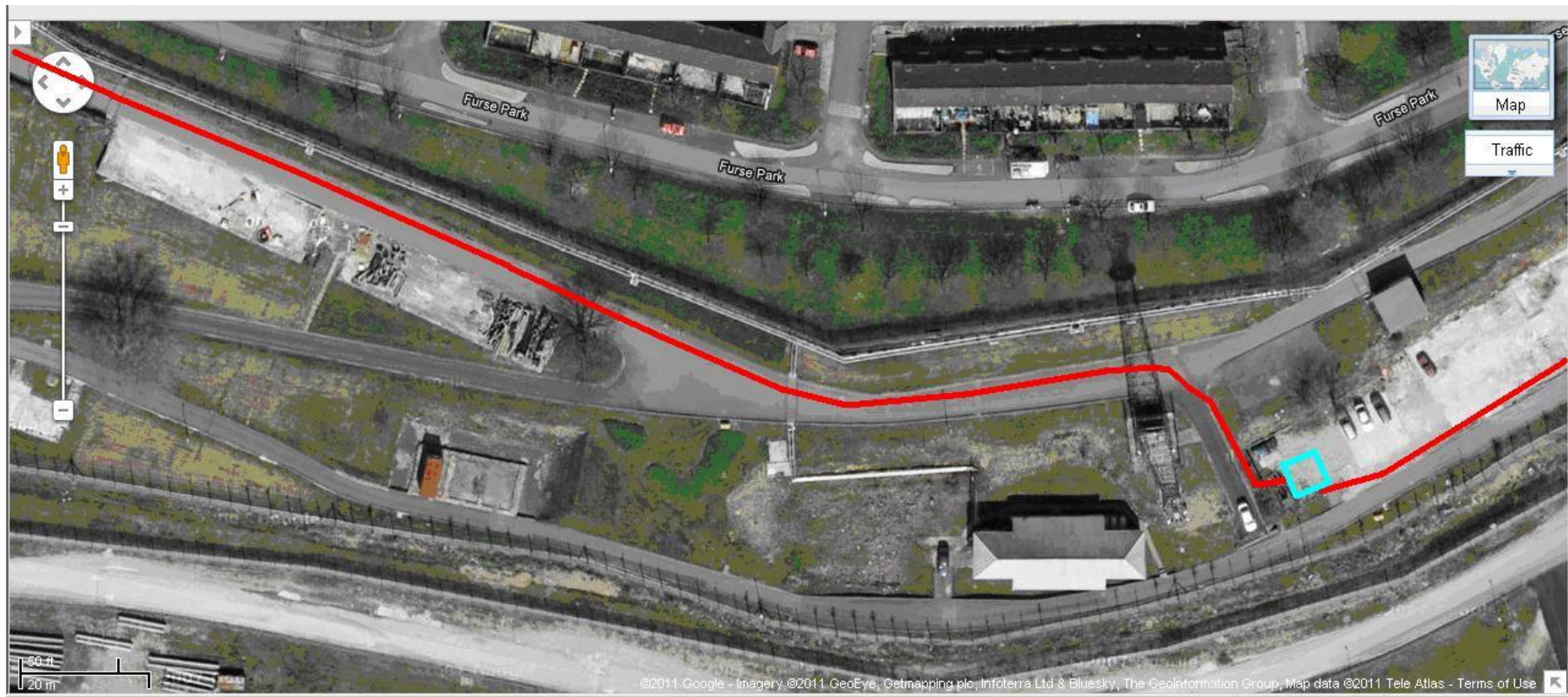
Bull point HV cable route and LDCCP substation



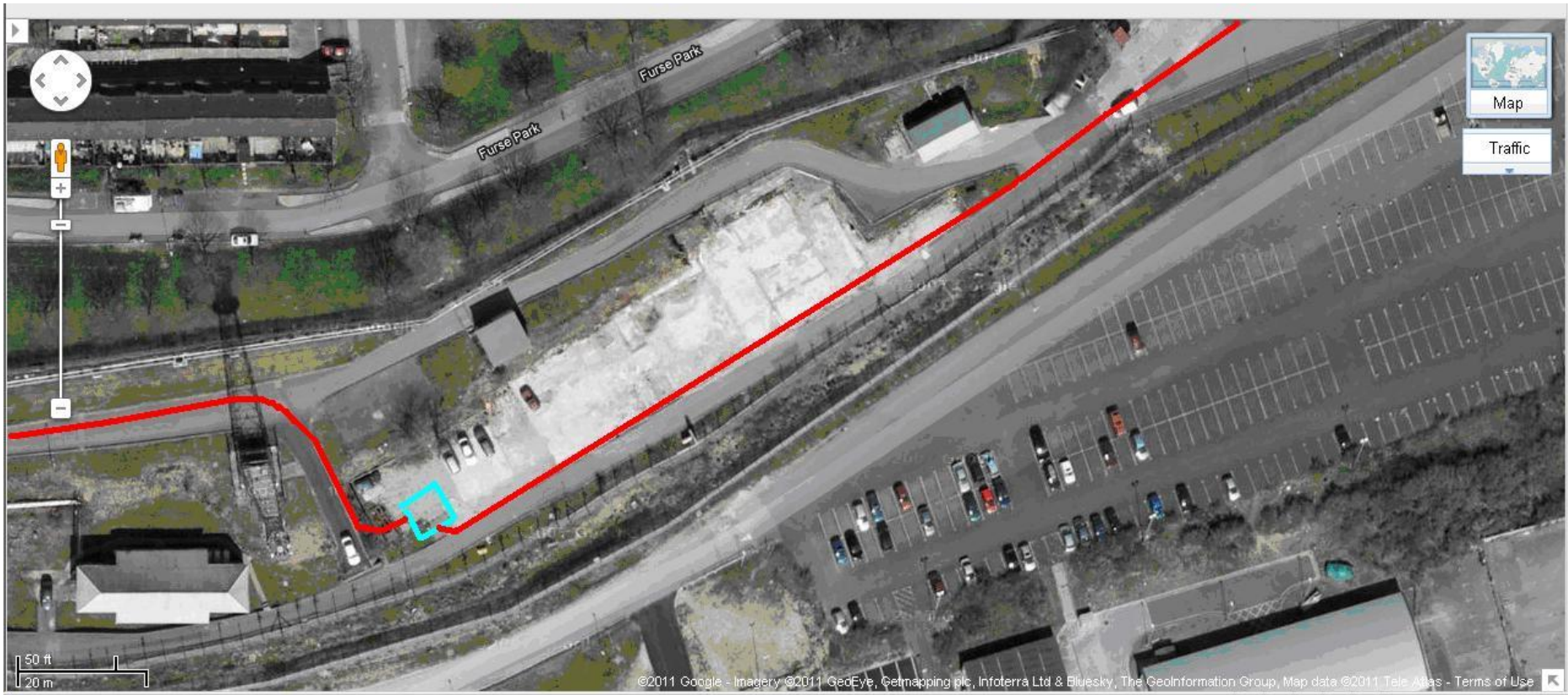
Site overview



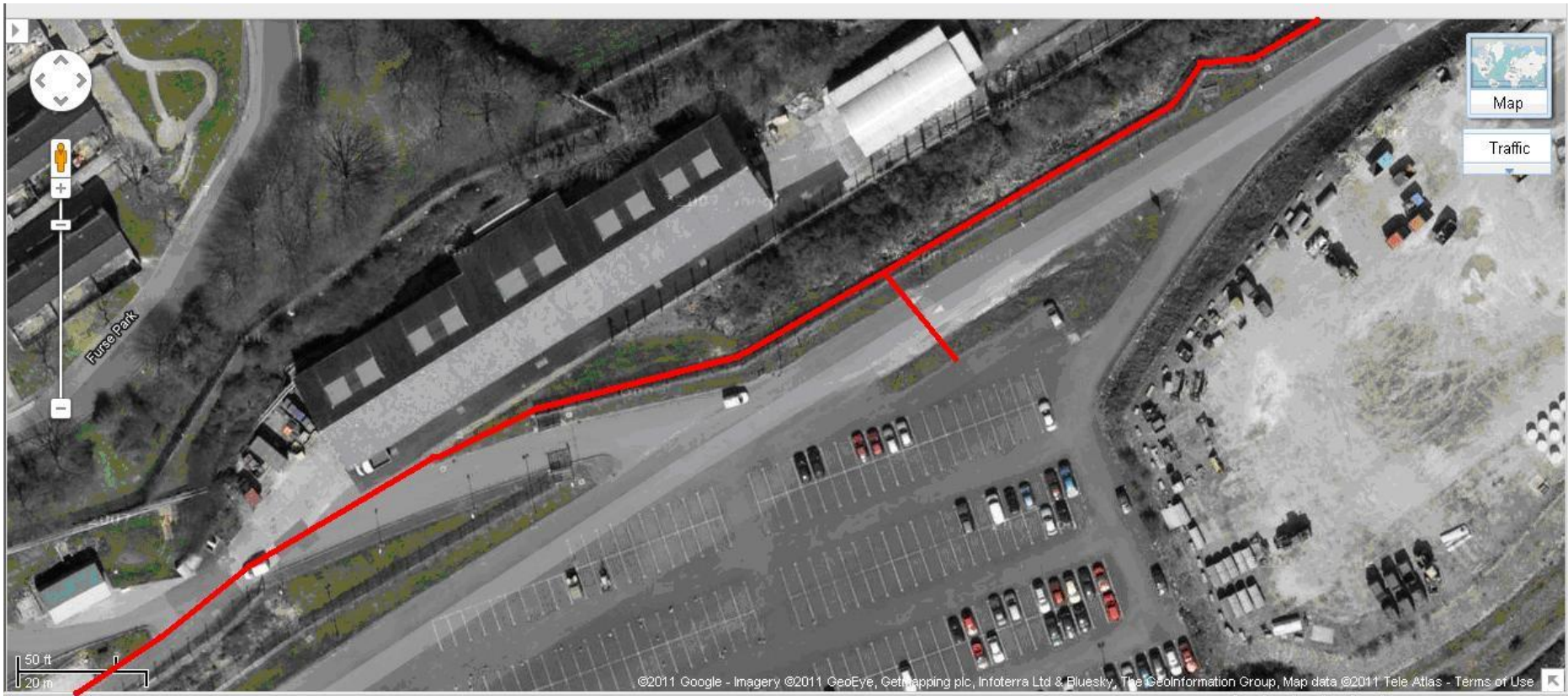
Cable trench route leaving Bullpoint substation towards the DLCCP substation on route



Cable trench into new LDCCP substation.
LDCCP Substation enclosed in GRP enclosure. RMU Transformer and MOD spec Saif pillar (DLCCP project)



Cable trench from Substation to road crossing at Molyneux Drive to be a shared HV and LV cable trench (combined HV & LV trench with MVV & DLCCP)



LV cable trench across Moleneux Drive for Building No.5 finishing at the edge of the carpark (DLCCP Project).



HV cable trench continuing onto the EFW construction site supply location.

