



## Good Neighbours Group Meeting

### Minutes of the 5<sup>th</sup> meeting held on 21<sup>st</sup> February 2019

<b>Present</b>		<b>Abbreviations</b>
Paul Carey	Managing Director MEB	PC
Mike Turner	Managing Director MEB	MT
Ken Walsh	MVV Head of Resources	KW
Rob Bramhill	Senior Site Manager	RB
Pete Lawrence	Contract Manager MEB	PL
Oliver Kautz	Project Director MEB	OK
Andy Malcolm	Service Manager, Waste Partnership DCC	AM
Allan Melville	Good Neighbours Group (Hawick Drive Area)	AMel
	Good Neighbours Group (Balmoral Tenants and Residents Association)	YT
Yvonne Tosh		
Peter Knapp	Head of Operations	PK
Gregor McGhee	QHSE Manager	GM
Mimi Mwasame	Community Liaison Manager, MEB	MM
	National Waste Incineration Lead & PPC Specialist,	TC
Tracey Curie	SEPA	
	Good Neighbours Group (Friends of the Earth Tayside)	JM
<b>Apologies</b>		
Nicola Dobson	Good Neighbours Group (Phoenix Group)	ND
Christina Roberts	Bailie for City Council, DCC	CR
		Good neighbours -GN

Item		Action
<b>1</b>	<b>Review of the last meetings' minutes</b>	
	Minutes of 20 <sup>th</sup> September were approved.	
<b>2</b>	<b>Discussions</b>	
	<p>1. Operations update</p> <p>GM – Presented on the annual smoke test of the RDF store. Please see attached report, appendix 1.</p> <ul style="list-style-type: none"> <li>- MEB are committed to carrying out these tests on a 6months basis</li> <li>- The fire brigade will be alerted in advance of testing.</li> </ul> <p>PK – Discussed MEBs' commitment to training staff. See attached report, appendix 2.</p> <ul style="list-style-type: none"> <li>- Elaborated more on the August 2018 outage (see previous minutes for more details).</li> <li>- Next outage will be held from 6<sup>th</sup> – 26<sup>th</sup> March.</li> <li>- Further improvements around health and safety include all staff and visitors on site are required to always wear safety glasses, Hi-Vis vest, helmets and safety / comfortable shoes.</li> </ul> <p>2. Construction Update</p> <p>RB – Provided updates on the construction.</p>	



	<ul style="list-style-type: none"> <li>- Drone footage of the site will be available on the MEB website.</li> <li>- We have passed the 100,000 working hours milestone (currently averaging 130,000hrs) without accidents or first aid incidences (0).</li> <li>- Construction is swiftly moving into the second phase which incorporates the process subcontractors, boiler builders, and steel work specialists. Meanwhile, fabrication works continues internationally.</li> <li>- Lengthy discussion around local employment and opportunities was held. In summary, RB reiterated that we are committed to hiring local employees wherever feasible and utilising local media for advertising of jobs and contracts. Currently the following contracts have been awarded locally, Security, facility maintenance, concrete and provision of lift. On-site, the following positions are filled by locals (residing within 35mile radius) Planning engineer, Building services manager, Safety engineer, Senior HSE manager, Site administrator.</li> <li>- Night shift work will be finished within the next 2 weeks.</li> <li>- Flood mitigation works are now completed. Tree planting activities will soon begin with residents and local schools encouraged to take part. Thereafter, the land will be handed back to DCC. Approximately 900 trees will be planted.</li> <li>- Unfortunately, we had incidences of vandalism on plant machinery and the fence on the flood mitigation works area.</li> </ul> <p>3. Community update MM – Provided an update on community benefits activities and progress. See attached report, appendix 3.</p> <ul style="list-style-type: none"> <li>- We were awarded 4 stars by Considerate Constructors.</li> <li>- We will engage with the local community and in planting of trees.</li> </ul>	
<b>3</b>	<b>AOB</b>	
	Dates of next meeting – 20 <sup>th</sup> June 1-2.30pm.	



## Annual Smoke Test of RDF Store 2018

**MVV Environment Baldovie Ltd.**

**Energy From Waste Combined Heat Facility**

**Process Facility**



# Scope of Work

DERL had previously been required by SEPA to carry out a smoke test of their RDF Store on an annual basis. The purpose of this test was to check the integrity of the RDF Store for any leakage points where fugitive odour emissions could potentially escape. MEB have now taken on this responsibility and MEBs first smoke test was conducted by Gregor McGhee QHSE Manager and Andrew Swaine Maintenance Manager. MEB can provide the following information;

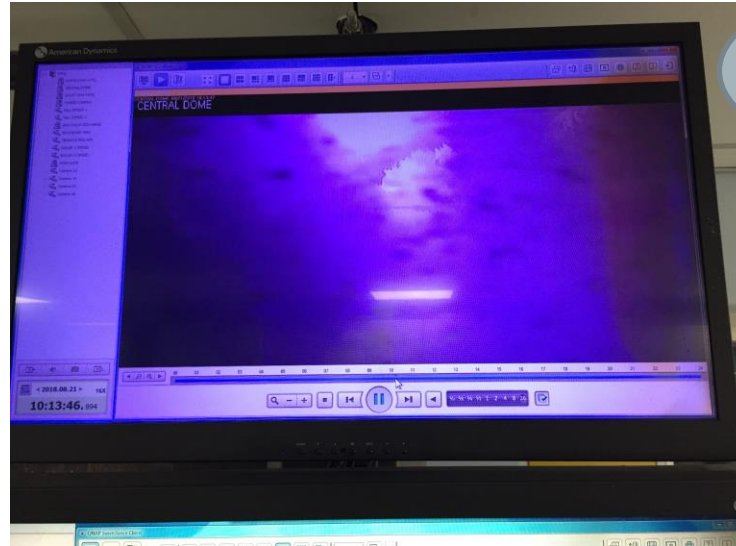
- ▶ Test was conducted on Tuesday 21/08/18 between 10:00 – 11:00 and the weather was;
- ▶ wind direction at 10:00 220<sup>o</sup> 2.3m/s and recorded at 141<sup>o</sup> 2.0m/s at 11:00
- ▶ Temperature was 13<sup>o</sup>C with light rain
- ▶ The OAP fans were switched at...10:20 to 10:58 of to allow ambient pressure within the store
- ▶ The store was then filled with smoke using a hired Pea Soup Rocket Turbo Portable Smoke System with 5 canisters dispersed into the RDF store
- ▶ Once all canisters were dispersed a full walk around of the RDF store was conducted
- ▶ Some minor smoke was found exiting electrical ductwork
- ▶ No other smoke was visible around any other area of the RDF store



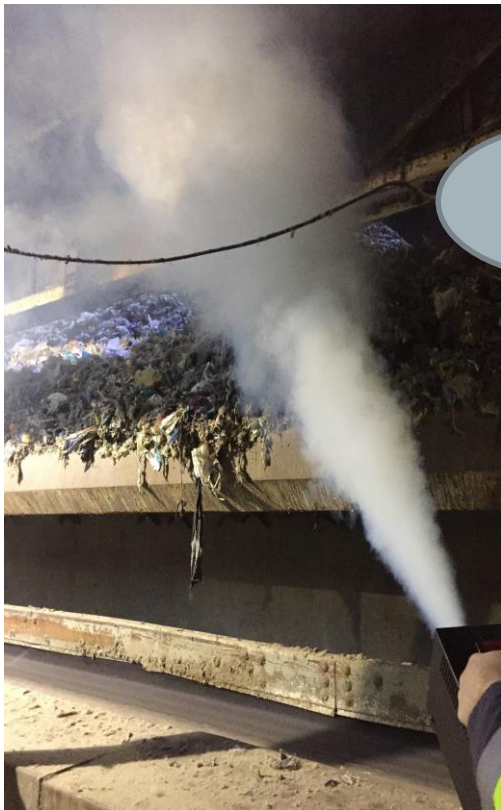
# Photographic Evidence Inside RDF Store



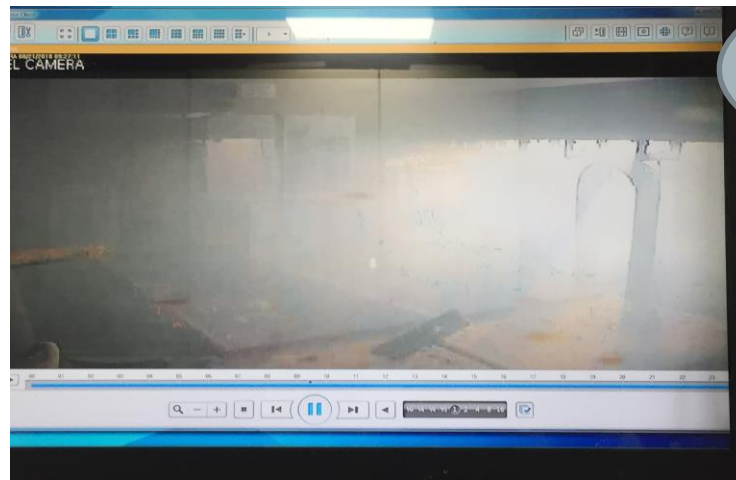
Machine



CCTV



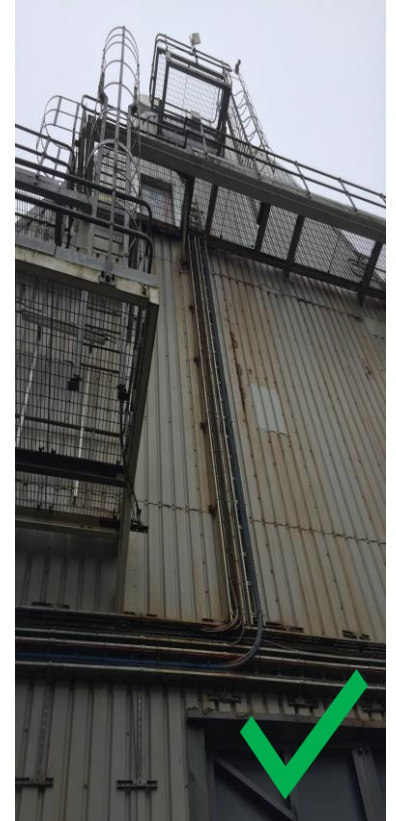
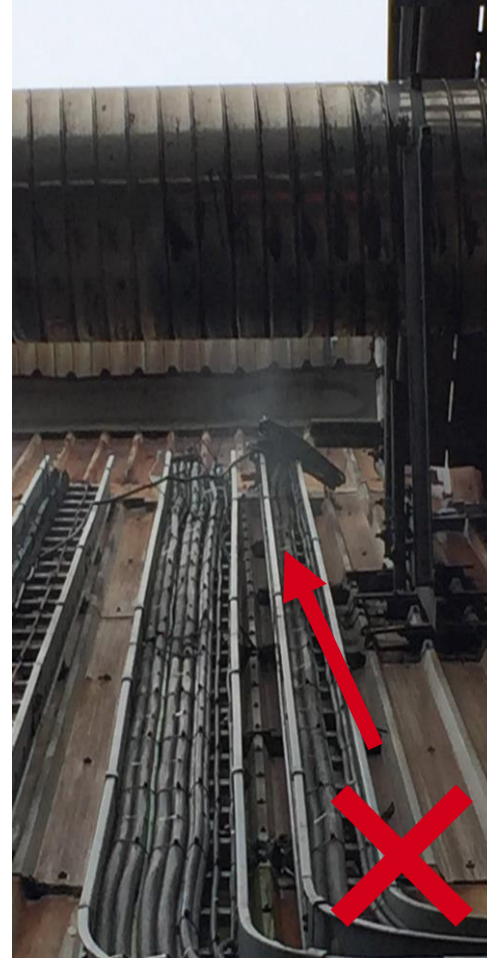
Smoke



CCTV



# Photographic Evidence Outside RDF Store



# Conclusion

The smoke test that was conducted has been very beneficial to the site. It has identified some minor deterioration in some electrical ductworks with smoke becoming visible.

Actions required from MEB;

- ▶ Forward on report to SEPA
- ▶ Repair damaged and deteriorated ductwork
- ▶ Provide evidence to SEPA that repair work has been completed
- ▶ Continue with annual smoke test until decommissioning process



## Progress since our last meeting

Ongoing staff training Ops techs + AP/ SAP + manual handling + CEMS .... [Training for Opstech and SAP candidates](#)

Done a mayor outage August/September 2018 in time an budget [Appendix Di. Autumn Outage Report \(002\).pdf](#)

Bed agglomerations: a lot has been done here(replacement of 1/3 of the nozzles in B2, ongoing replacement of missing nozzles with a special type of nozzle, cleaning regime of the nozzles and bed after an bed dig out, refurbishment of the bed dp-ports, adjustment of the spreader-air, water injection for bed temperature regulation,...) → no bed agglomeration related unplanned outage appeared since the measures has been done

Better availability → less unplanned shut downs, less emissions (noise, air, odour)

RCPP plant successfully in operation since September [The New RCPP](#)

Overall good reduction of the emissions in 2018 in comparison to 2017

Doing twice a year a smoke test on RDF store to detect and eliminate any leakages

Duty to wear safety glasses in the process plant since February 2019





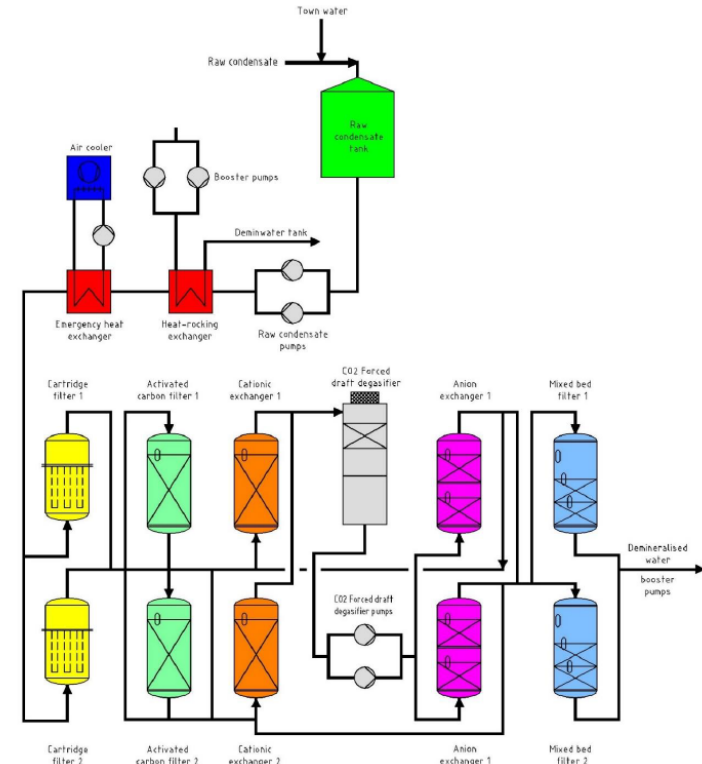
# Training for Opstech and SAP candidates



- **20 plus modules covering technical, design, environmental, business and legal aspects of supervising and operating an EfW plant**
- **Delivered in 2 x 2hr Powerpoint session each week, with catchup and supplementary meetings/discussions**
- **Test papers for all on each module**
- **Build up a profile of knowledge, strengths and weaknesses for each candidate**
- **Attendance has been very good (c. 60% after shift and holidays), with positive feedback received**
- **[Slide 2](#)**



# The New RCPP





# MVV Environment Baldovie Ltd – Energy from Waste

Good neighbours presentation on community benefits activities

21<sup>st</sup> February 2019

We inspire  
with energy.

# Engagement activities

- 2 apprentices
- Market street placement / employer's event organised by Abertay University
- Spring newsletter distribution
- Awarded 4 stars from Considerate Constructors
- Developing the young workforce: engineering business breakfast
- Its your future event held in Carnoustie
- Site visit by MSP Bill Bowman
- Meet and Greet event at the Douglas community centre
- Flood mitigation notice
- Winter edition newsletter distribution
- Civil engineer student intern



**Meet and greet at the Douglas community centre**



**Meet and greet at the Douglas community centre**



**Work placement student Ben with HSE Manager Alan Law**





## Considerate Constructors Scheme Code of Considerate Practice

Considerate constructors seek to improve the image of the construction industry by striving to promote and achieve best practice under this Code. They will:

### Care about Appearance

Constructors should ensure sites appear professional and well managed

- Ensuring that the external appearance of sites enhances the image of the industry.
- Being organised, clean and tidy.
- Enhancing the appearance of facilities, stored materials, vehicles and plant.
- Raising the image of the workforce by their appearance.

### Respect the Community

Constructors should give utmost consideration to their impact on neighbours and the public

- Informing, respecting and showing courtesy to those affected by the work.
- Minimising the impact of deliveries, parking and work on the public highway.
- Contributing to and supporting the local community and economy.
- Working to create a positive and enduring impression, and promoting the Code.

### Protect the Environment

Constructors should protect and enhance the environment

- Identifying, managing and promoting environmental issues.
- Seeking sustainable solutions, and minimising waste, the carbon footprint and resources.
- Minimising the impact of vibration, and air, light and noise pollution.
- Protecting the ecology, the landscape, wildlife, vegetation and water courses.

### Secure everyone's Safety

Constructors should attain the highest levels of safety performance

- Having systems that care for the safety of the public, visitors and the workforce.
- Minimising security risks to neighbours.
- Having initiatives for continuous safety improvement.
- Embedding attitudes and behaviours that enhance safety performance.

### Value their Workforce

Constructors should provide a supportive and caring working environment

- Providing a workplace where everyone is respected, treated fairly, encouraged and supported.
- Identifying personal development needs and promoting training.
- Caring for the health and wellbeing of the workforce.
- Providing and maintaining high standards of welfare.

The Code of Considerate Practice outlines the Scheme's expectations of all registered sites, companies and suppliers, describing those areas that are considered fundamental by the Scheme in helping improve the image of construction.

For more information, call 0800 783 1423 or visit [www.ccscheme.org.uk](http://www.ccscheme.org.uk)

Improving the image of construction

# We are considerate constructors



We are registered with the Considerate Constructors Scheme and have made a commitment to carry out our construction activity with the greatest care and consideration.

The Scheme is a non-profit-making, independent organisation set up to improve the image of construction. The Scheme has no legislative powers but encourages the industry to perform beyond legal requirements.

Participation is voluntary and those who choose to register with the Scheme must adhere to the Code of Considerate Practice. This Code is designed to encourage us to work with the greatest care and

consideration for the neighbourhood and general public, the workforce and the environment.

We are visited by one of the Scheme's experienced Monitors who assesses our performance and scores us against the Code. The Monitor will also offer guidance and support to help further improve our considerate performance. The Code of Considerate Practice is made up of the five sections detailed below.

### Care about Appearance

Constructors should ensure sites appear professional and well managed

Help keep your place of work, including all facilities and vehicles, clean and tidy, and take pride in your appearance. Do not drop litter and keep dirt and dust to a minimum.

### Respect the Community

Constructors should give utmost consideration to their impact on neighbours and the public

Think about the effect your work may have on your neighbours. Park your vehicles considerately and avoid inconvenience to others. Be courteous and respectful to the public and leave them with a positive impression of our industry.

### Protect the Environment

Constructors should protect and enhance the environment

Save energy by turning off electrical items, water and plant when not in use. Minimise waste and use recycling facilities. Avoid pollution and be mindful of your impact on the environment.

### Secure everyone's Safety

Constructors should attain the highest levels of safety performance


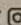

Ensure you are properly trained to carry out your work, and that other colleagues and the public will not be in danger. Be responsible around plant and materials. Encourage positive attitudes and behaviours that will create a safer work environment.

### Value their Workforce

Constructors should provide a supportive and caring working environment

Treat everyone with fairness and respect. Help to support a diverse workforce and create a positive working environment for all. Take pride in your industry and the work that you do.

**0800 783 1423**

[www.ccscheme.org.uk](http://www.ccscheme.org.uk)   

Improving the image of construction

# AOB

- Vandalism on the construction site
- Noise complaint – investigation found no merit to the complaint



**MVV Environment Baldovie Limited**  
**Forties Road**  
**Dundee, DD4 0NS**

[www.mvvuk.co.uk](http://www.mvvuk.co.uk)  
[Mimi.mwasame@mvvuk.co.uk](mailto:Mimi.mwasame@mvvuk.co.uk)

Ein Unternehmen in der  
Metropolregion Rhein-Neckar

